

For Research Use Only

Moesin Recombinant antibody, PBS Only

Catalog Number: 82009-1-PBS

Featured Product



Basic Information

Catalog Number:

82009-1-PBS

Size:

100ug, Concentration: 1 mg/ml by Nanodrop;

Source:

Rabbit

Isotype:

IgG

Immunogen Catalog Number:

AG9623

GenBank Accession Number:

BC017293

GeneID (NCBI):

4478

UNIPROT ID:

P26038

Full Name:

moesin

Calculated MW:

577 aa, 68 kDa

Observed MW:

68-70 kDa

Purification Method:

Protein A purification

CloneNo.:

3B8

Applications

Tested Applications:

WB, IHC, IF/ICC, Indirect ELISA

Species Specificity:

human, mouse, rat

Background Information

Moesin belongs to the ezrin-radixin-moesin (ERM) family of proteins which act as cross-linkers between membrane and actin cytoskeleton. ERM proteins provide structural links to strengthen the cell cortex and facilitate several key cellular processes, including membrane dynamics, substrate adhesion, cell survival, cell adhesion, and motility. The function of ERM proteins is highly reliant on phosphorylation induced conformational changes in response to growth factor, chemokine, and antigen stimulation. This antibody may cross-react with ezrin or radixin with molecular weights around 68-70 kDa.

Storage

Storage:

Store at -80°C.

Storage Buffer:

PBS Only

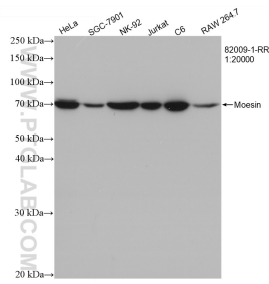
For technical support and original validation data for this product please contact:

T: 1 (888) 4PTGLAB (1-888-478-4522) (toll free in USA), or 1(312) 455-8498 (outside USA)

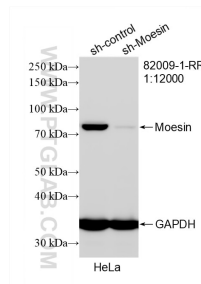
E: proteintech@ptglab.com
W: ptglab.com

This product is exclusively available under Proteintech Group brand and is not available to purchase from any other manufacturer.

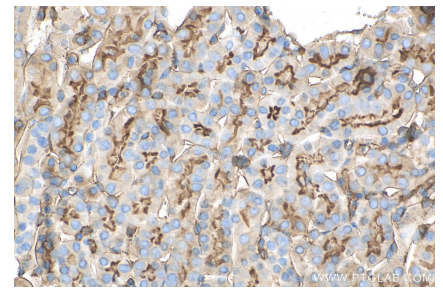
Selected Validation Data



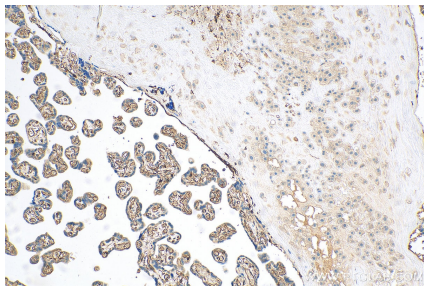
Various lysates were subjected to SDS PAGE followed by western blot with 82009-1-RR (MSN antibody) at dilution of 1:20000 incubated at room temperature for 1.5 hours. This data was developed using the same antibody clone with 82009-1-PBS in a different storage buffer formulation.



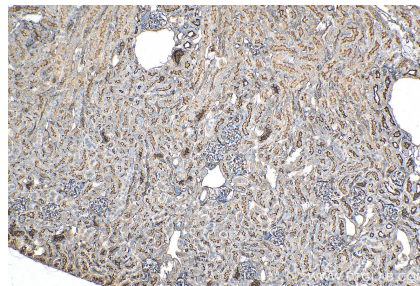
WB result of Moesin antibody (82009-1-RR; 1:12000; incubated at room temperature for 1.5 hours) with sh-Control and sh-Moesin transfected HeLa cells. This data was developed using the same antibody clone with 82009-1-PBS in a different storage buffer formulation.



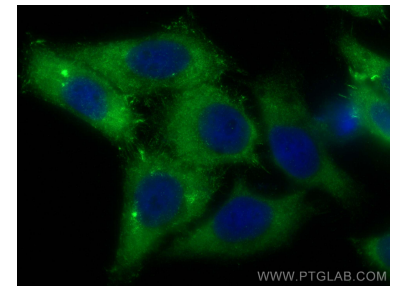
Immunohistochemical analysis of paraffin-embedded mouse kidney tissue slide using 82009-1-RR (Moesin antibody) at dilution of 1:200 (under 40x lens). Heat mediated antigen retrieval with Tris-EDTA buffer (pH 9.0). This data was developed using the same antibody clone with 82009-1-PBS in a different storage buffer formulation.



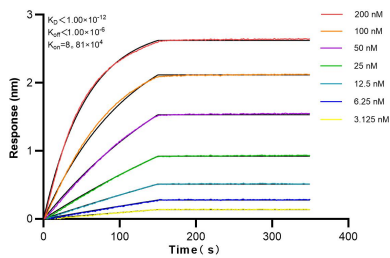
Immunohistochemical analysis of paraffin-embedded human placenta tissue slide using 82009-1-RR (Moesin antibody) at dilution of 1:200 (under 10x lens). Heat mediated antigen retrieval with Tris-EDTA buffer (pH 9.0). This data was developed using the same antibody clone with 82009-1-PBS in a different storage buffer formulation.



Immunohistochemical analysis of paraffin-embedded mouse kidney tissue slide using 82009-1-RR (Moesin antibody) at dilution of 1:200 (under 10x lens). Heat mediated antigen retrieval with Tris-EDTA buffer (pH 9.0). This data was developed using the same antibody clone with 82009-1-PBS in a different storage buffer formulation.



Immunofluorescent analysis of (-20°C Ethanol) fixed HepG2 cells using Moesin antibody (82009-1-RR, Clone: 3B8) at dilution of 1:2000 and CoraLite@488-Conjugated AffiniPure Goat Anti-Rabbit IgG(H+L). This data was developed using the same antibody clone with 82009-1-PBS in a different storage buffer formulation.



Biolayer interferometry (BLI) kinetic assays of 82009-1-RR against Human MSN were performed. The affinity constant is below 1 pM.