

For Research Use Only

PINK1 Recombinant antibody, PBS Only (Capture/Detector)

Catalog Number:81991-5-PBS



Basic Information

Catalog Number: 81991-5-PBS	GenBank Accession Number: BC028215	Purification Method: Protein A purification
Size: 100ug , Concentration: 1 mg/ml by Nanodrop;	GeneID (NCBI): 65018	CloneNo.: 240449G8
Source: Rabbit	UNIPROT ID: Q9BXM7	
Isotype: IgG	Full Name: PTEN induced putative kinase 1	
Immunogen Catalog Number: AG19825	Calculated MW: 581 aa, 63 kDa	

Applications

Tested Applications:
Cytometric bead array, Sandwich ELISA, Indirect ELISA,
Sample test

Species Specificity:
human

Product Information

81991-5-PBS targets PINK1 as part of a matched antibody pair:

MP00404-1: 81991-2-PBS capture and 81991-5-PBS detection (validated in Cytometric bead array, Sandwich ELISA)

MP00404-2: 81991-5-PBS capture and 81991-3-PBS detection (validated in Cytometric bead array)

Unconjugated rabbit recombinant monoclonal antibody in PBS only (BSA and azide free) storage buffer at a concentration of 1 mg/mL, ready for conjugation. Created using Proteintech's proprietary in-house recombinant technology. Recombinant production enables unrivalled batch-to-batch consistency, easy scale-up, and future security of supply.

This conjugation ready format makes antibodies ideal for use in many applications including: ELISAs, multiplex assays requiring matched pairs, mass cytometry, and multiplex imaging applications. Antibody use should be optimized by the end user for each application and assay.

Storage

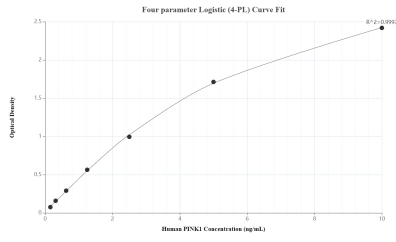
Storage:
Store at -80°C.

Storage Buffer:
PBS Only

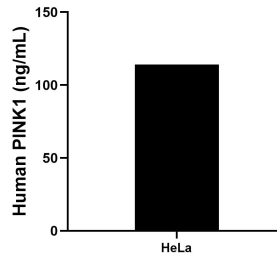
For technical support and original validation data for this product please contact:
T: 1 (888) 4PTGLAB (1-888-478-4522) (toll free in USA), or 1(312) 455-8498 (outside USA) E: proteintech@ptglab.com
W: ptglab.com

This product is exclusively available under Proteintech Group brand and is not available to purchase from any other manufacturer.

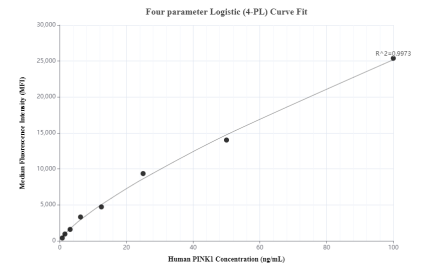
Selected Validation Data



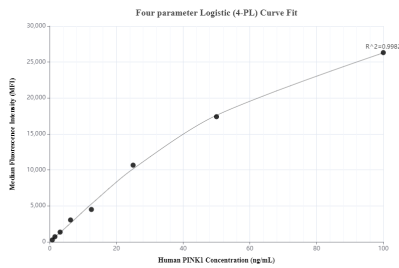
Sandwich ELISA standard curve of MP00404-1, Human PINK1 Recombinant Matched Antibody Pair - PBS only. 81991-2-PBS was coated to a plate as the capture antibody and incubated with serial dilutions of standard Ag19825. 81991-5-PBS was HRP conjugated as the detection antibody. Range: 0.156-10 ng/mL



The mean PINK1 concentration was determined to be 114.07 ng/mL in HeLa cell extract based on a 2.00 mg/mL extract load.



Cytometric bead array standard curve of MP00404-1, PINK1 Recombinant Matched Antibody Pair, PBS Only. Capture antibody: 81991-2-PBS. Detection antibody: 81991-5-PBS. Standard: Ag19825. Range: 0.78-100 ng/mL



Cytometric bead array standard curve of MP00404-2, PINK1 Recombinant Matched Antibody Pair, PBS Only. Capture antibody: 81991-5-PBS. Detection antibody: 81991-3-PBS. Standard: Ag19825. Range: 0.78-100 ng/mL