

For Research Use Only

# PINK1 Recombinant antibody

Catalog Number: 81991-4-RR



## Basic Information

<b>Catalog Number:</b> 81991-4-RR	<b>GenBank Accession Number:</b> BC028215	<b>Purification Method:</b> Protein A purification
<b>Size:</b> 100ul , Concentration: 1000 µg/ml by Nanodrop;	<b>GeneID (NCBI):</b> 65018	<b>CloneNo.:</b> 240449E7
<b>Source:</b> Rabbit	<b>UNIPROT ID:</b> Q9BXM7	<b>Recommended Dilutions:</b> WB 1:2000-1:10000
<b>Isotype:</b> IgG	<b>Full Name:</b> PTEN induced putative kinase 1	
<b>Immunogen Catalog Number:</b> AG19825	<b>Calculated MW:</b> 581 aa, 63 kDa	
	<b>Observed MW:</b> 46 kDa	

## Applications

<b>Tested Applications:</b> WB, FC (Intra), ELISA	<b>Positive Controls:</b> WB : HeLa cells, A549 cells, mouse brain tissue, rat brain tissue
<b>Species Specificity:</b> human, mouse, rat	

## Background Information

PINK1 is a mitochondrial serine/threonine-protein kinase that protects cells from stress-induced mitochondrial dysfunction. The precursor of PINK1 (65 kDa) is synthesized in the cytosol and is imported into the outer membrane of mitochondria. PINK1 is further transferred into the inner membrane. The full-length PINK1 can be proteolytically processed into 52-55 kDa and 45-46 kDa forms (PMID: 18221368; 25108683; 18031932). The half-life of the mature form of PINK1 is very short and it was proposed that the proteasome is involved in its degradation (PMID: 23472196). The gene of PINK1 maps to chromosome 1p36.12. Two alternatively spliced variants exist, the shorter isoform (30 kDa) produced by alternative splicing. Mutations in the PINK1 gene cause autosomal recessive early-onset Parkinson's disease.

## Storage

**Storage:**  
Store at -20°C. Stable for one year after shipment.  
**Storage Buffer:**  
PBS with 0.02% sodium azide and 50% glycerol pH 7.3.  
Aliquoting is unnecessary for -20°C storage

\*\*\* 20ul sizes contain 0.1% BSA

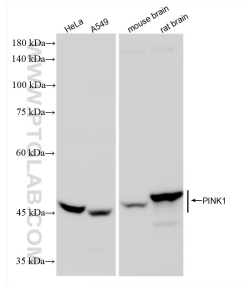
For technical support and original validation data for this product please contact:

T: 1 (888) 4PTGLAB (1-888-478-4522) (toll free  
in USA), or 1(312) 455-8498 (outside USA)

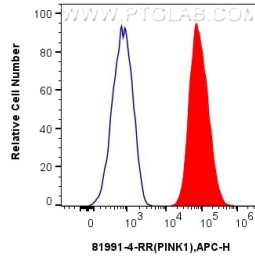
E: [proteintech@ptglab.com](mailto:proteintech@ptglab.com)  
W: [ptglab.com](http://ptglab.com)

This product is exclusively available under Proteintech Group brand and is not available to purchase from any other manufacturer.

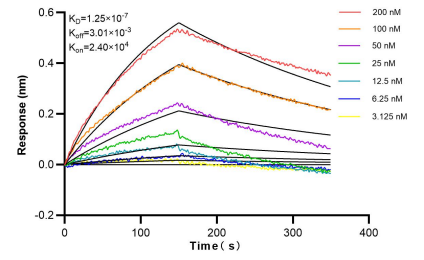
## Selected Validation Data



Various lysates were subjected to SDS PAGE followed by western blot with 81991-4-RR (PINK1 antibody) at dilution of 1:5000 incubated at room temperature for 1.5 hours.



$1 \times 10^6$  Jurkat cells were intracellularly stained with 0.25  $\mu$ g PINK1 Recombinant antibody (81991-4-RR, Clone:240449E7) and APC-Conjugated AffiniPure Goat Anti-Rabbit IgG(H+L)(red), or 0.25  $\mu$ g Isotype Control (blue). Cells were fixed with 4% PFA and permeabilized with Flow Cytometry Perm Buffer (PF00011-C).



Biolayer interferometry (BLI) kinetic assays of 81991-4-RR against Human PINK1 were performed. The affinity constant is 125 nM.