

For Research Use Only

# PHGDH Recombinant antibody, PBS Only

Catalog Number: 81986-1-PBS

Featured Product



## Basic Information

**Catalog Number:**

81986-1-PBS

**Size:**

100ug, Concentration: 1 mg/ml by Nanodrop;

**Source:**

Rabbit

**Isotype:**

IgG

**Immunogen Catalog Number:**

AG6445

**GenBank Accession Number:**

BC000303

**GeneID (NCBI):**

26227

**UNIPROT ID:**

O43175

**Full Name:**

phosphoglycerate dehydrogenase

**Calculated MW:**

57 kDa

**Observed MW:**

57 kDa

**Purification Method:**

Protein A purification

**CloneNo.:**

5L16

## Applications

**Tested Applications:**

WB, IHC, IP, Indirect ELISA

**Species Specificity:**

human, mouse, rat

## Background Information

PHGDH(D-3-phosphoglycerate dehydrogenase) is also named as 3-PGDH, PGDH3 and belongs to the D-isomer specific 2-hydroxyacid dehydrogenase family. It catalyzes the transition of 3-phosphoglycerate into 3-phosphohydroxypyruvate, which is the first and rate-limiting step in the phosphorylated pathway of serine biosynthesis, using NAD<sup>+</sup>/NADH as a cofactor. 3-PGDH deficiency is a rare recessive inborn error in the biosynthesis of the amino acid L-serine characterized clinically by congenital microcephaly, psychomotor retardation, and intractable seizures(PMID:19235232).

## Storage

**Storage:**

Store at -80°C.

**Storage Buffer:**

PBS Only

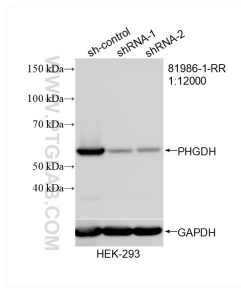
For technical support and original validation data for this product please contact:

T: 1 (888) 4PTGLAB (1-888-478-4522) (toll free in USA), or 1(312) 455-8498 (outside USA)

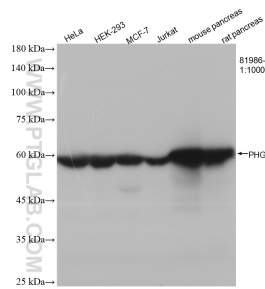
E: [proteintech@ptglab.com](mailto:proteintech@ptglab.com)  
W: [ptglab.com](http://ptglab.com)

This product is exclusively available under Proteintech Group brand and is not available to purchase from any other manufacturer.

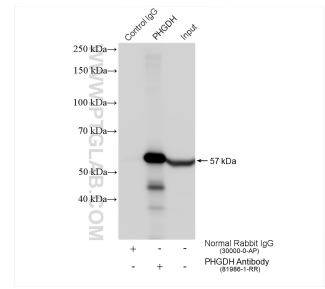
## Selected Validation Data



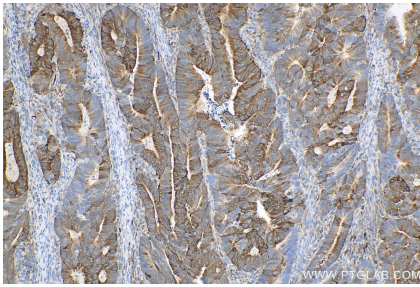
WB result of PHGDH antibody (81986-1-RR; 1:12000; incubated at room temperature for 1.5 hours) with sh-Control and sh-PHGDH transfected HEK-293 cells. This data was developed using the same antibody clone with 81986-1-PBS in a different storage buffer formulation.



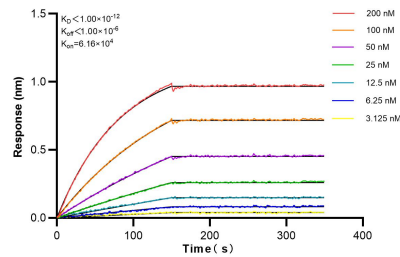
Various lysates were subjected to SDS PAGE followed by western blot with 81986-1-RR (PHGDH antibody) at dilution of 1:10000 incubated at room temperature for 1.5 hours. This data was developed using the same antibody clone with 81986-1-PBS in a different storage buffer formulation.



IP result of anti-PHGDH (IP:81986-1-RR, 4ug; Detection:81986-1-RR 1:10000) with HeLa cells lysate 1760 ug. This data was developed using the same antibody clone with 81986-1-PBS in a different storage buffer formulation.



Immunohistochemical analysis of paraffin-embedded human colon cancer tissue slide using 81986-1-RR (PHGDH antibody) at dilution of 1:200 (under 10x lens). Heat mediated antigen retrieval with Tris-EDTA buffer (pH 9.0). This data was developed using the same antibody clone with 81986-1-PBS in a different storage buffer formulation.



Biolayer interferometry (BLI) kinetic assays of 81986-1-RR against Human PHGDH were performed. The affinity constant is below 1 pM.