

For Research Use Only

UBE2S Recombinant antibody

Catalog Number: 81854-1-RR



Basic Information

Catalog Number: 81854-1-RR	GenBank Accession Number: BC066948	Purification Method: Protein A purification
Size: 100ul , Concentration: 1000 ug/ml by Nanodrop;	GeneID (NCBI): 27338	CloneNo.: 6D18
Source: Rabbit	UNIPROT ID: Q16763	Recommended Dilutions: WB 1:5000-1:50000 IHC 1:500-1:2000 IF/ICC 1:50-1:500
Isotype: IgG	Full Name: ubiquitin-conjugating enzyme E2S	
Immunogen Catalog Number: AG5264	Calculated MW: 222 aa, 24 kDa	
	Observed MW: 28 kDa	

Applications

Tested Applications:
WB, IHC, IF/ICC, ELISA

Species Specificity:
human, mouse

**Note-IHC: suggested antigen retrieval with
TE buffer pH 9.0; (*) Alternatively, antigen
retrieval may be performed with citrate
buffer pH 6.0**

Positive Controls:

WB : HeLa cells, HEK-293 cells, MCF-7 cells, HepG2
cells, K-562 cells, NIH/3T3 cells

IHC : mouse testis tissue,

IF/ICC : NCCIT cells,

Background Information

UBE2S(Ubiquitin-conjugating enzyme E2 S) is also named as E2EPF and belongs to the ubiquitin-conjugating enzyme family. It acts as an essential factor of the anaphase promoting complex/cyclosome (APC/C) and a cell cycle-regulated ubiquitin ligase that controls progression through mitosis. Overexpression of UBE2S can increase tumor cell proliferation, invasion, and metastasis through the VHL-HIF pathway (PMID:16819549).

Storage

Storage:
Store at -20°C. Stable for one year after shipment.
Storage Buffer:
PBS with 0.02% sodium azide and 50% glycerol pH 7.3.
Aliquoting is unnecessary for -20°C storage

*** 20ul sizes contain 0.1% BSA

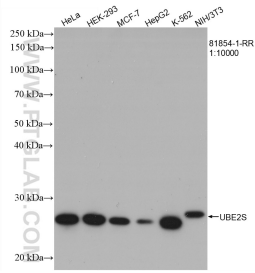
For technical support and original validation data for this product please contact:

T: 1 (888) 4PTGLAB (1-888-478-4522) (toll free
in USA), or 1(312) 455-8498 (outside USA)

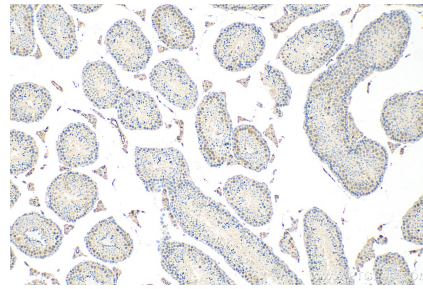
E: proteintech@ptglab.com
W: ptglab.com

This product is exclusively available under Proteintech Group brand and is not available to purchase from any other manufacturer.

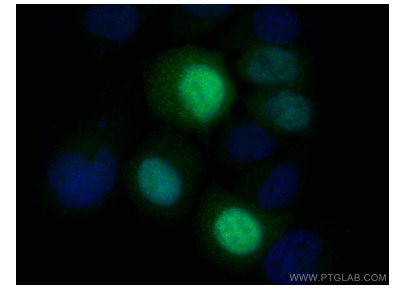
Selected Validation Data



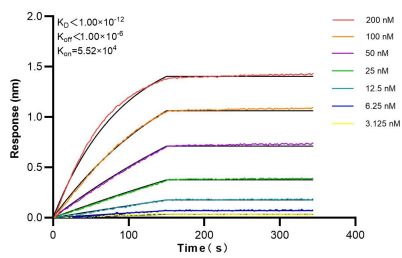
Various lysates were subjected to SDS PAGE followed by western blot with 81854-1-RR (UBE2S antibody) at dilution of 1:10000 incubated at room temperature for 1.5 hours.



Immunohistochemical analysis of paraffin-embedded mouse testis tissue slide using 81854-1-RR (UBE2S antibody) at dilution of 1:1000 (under 10x lens). Heat mediated antigen retrieval with Sodium Citrate buffer (pH 6.0).



Immunofluorescent analysis of (4% PFA) fixed NCCIT cells using UBE2S antibody (81854-1-RR, Clone: 6D18) at dilution of 1:200 and CoraLite®488-Conjugated AffiniPure Goat Anti-Rabbit IgG(H+L).



Biolayer interferometry (BLI) kinetic assays of 81854-1-RR against Human UBE2S were performed. The affinity constant is below 1 pM.