

For Research Use Only

GFP tag Recombinant antibody

Catalog Number:81835-2-RR



Basic Information

Catalog Number: 81835-2-RR	GenBank Accession Number: M62653	Purification Method: Protein A purification
Size: 100ul , Concentration: 1000 µg/ml by Nanodrop;	GeneID (NCBI): P42212	CloneNo.: 241614B3
Source: Rabbit	UNIPROT ID: P42212	Recommended Dilutions: WB 1:5000-1:50000 IF/ICC 1:125-1:500
Isotype: IgG	Full Name: GFP	
Immunogen Catalog Number: AG2128	Calculated MW: 26 kDa	

Applications

Tested Applications: WB, IF/ICC, ELISA	Positive Controls: WB : Recombinant protein, Transfected HEK-293 cells IF/ICC : Transfected COS-7,
Species Specificity: aequorea victoria, recombinant protein	

Background Information

Green Fluorescent Proteins (GFPs) encompass a diverse range of proteins carrying a green chromophore, originating from various species and forming different protein lineages. Wildtype GFP consists of 238 amino acid residues (26.9 kDa). GFP was first identified in the jellyfish *Aequorea victoria*. It emits green light with a peak wavelength of 509 nm upon excitation by blue light at 395 nm. When fused with other proteins, GFP serves as a versatile reporter protein e.g. for quantifying expression levels or facilitates visualization of subcellular localization through fluorescence microscopy. This antibody is generated against the full-length eGFP protein. It exhibits reactivity towards variants of *Aequorea victoria* GFP, including S65T-GFP, RS-GFP, YFP, CFP, and eGFP.

Storage

Storage:
Store at -20°C. Stable for one year after shipment.
Storage Buffer:
PBS with 0.02% sodium azide and 50% glycerol pH 7.3.
Aliquoting is unnecessary for -20°C storage

*** 20ul sizes contain 0.1% BSA

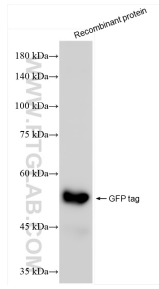
For technical support and original validation data for this product please contact:

T: 1 (888) 4PTGLAB (1-888-478-4522) (toll free in USA), or 1(312) 455-8498 (outside USA)

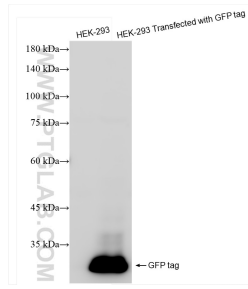
E: proteintech@ptglab.com
W: ptglab.com

This product is exclusively available under Proteintech Group brand and is not available to purchase from any other manufacturer.

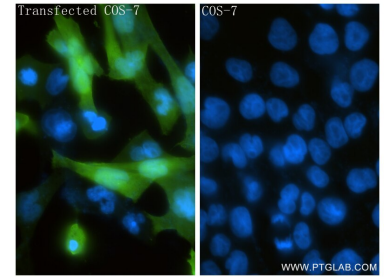
Selected Validation Data



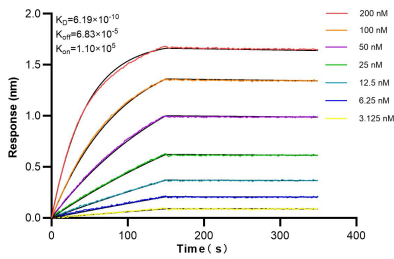
Recombinant protein were subjected to SDS PAGE followed by western blot with 81835-2-RR (GFP tag antibody) at dilution of 1:10000 incubated at room temperature for 1.5 hours.



Transfected HEK-293 cells were subjected to SDS PAGE followed by western blot with 81835-2-RR (GFP tag antibody) at dilution of 1:10000 incubated at room temperature for 1.5 hours.



Immunofluorescent analysis of (4% PFA) fixed Transfected COS-7 cells using GFP tag antibody (81835-2-RR, Clone: 241614B3) at dilution of 1:250 and CoraLite®488-Conjugated Goat Anti-Rabbit IgG(H+L) (SA00013-2).



Bi-layer interferometry (BLI) kinetic assays of 81835-2-RR against Aequorea victoria GFP tag were performed. The affinity constant is 0.619 nM.