

For Research Use Only

# Aequorea victoria GFP tag Recombinant antibody, PBS Only

Catalog Number: 81835-2-PBS



## Basic Information

<b>Catalog Number:</b> 81835-2-PBS	<b>GenBank Accession Number:</b> M62653	<b>Purification Method:</b> Protein A purification
<b>Size:</b> 100ug, Concentration: 1 mg/ml by Nanodrop;	<b>GeneID (NCBI):</b> UNIPROT ID: P42212	<b>CloneNo.:</b> 241614B3
<b>Source:</b> Rabbit	<b>Full Name:</b>	
<b>Isotype:</b> IgG	<b>Calculated MW:</b> 26 kDa	
<b>Immunogen Catalog Number:</b> AG2128		

## Applications

**Tested Applications:**  
WB, IF/ICC, Indirect ELISA

**Species Specificity:**  
aequorea victoria, recombinant protein

## Background Information

Green Fluorescent Proteins (GFPs) encompass a diverse range of proteins carrying a green chromophore, originating from various species and forming different protein lineages. Wildtype GFP consists of 238 amino acid residues (26.9 kDa). GFP was first identified in the jellyfish *Aequorea victoria*. It emits green light with a peak wavelength of 509 nm upon excitation by blue light at 395 nm. When fused with other proteins, GFP serves as a versatile reporter protein e.g. for quantifying expression levels or facilitates visualization of subcellular localization through fluorescence microscopy. This antibody is generated against the full-length eGFP protein. It exhibits reactivity towards variants of *Aequorea victoria* GFP, including S65T-GFP, RS-GFP, YFP, CFP, and eGFP.

## Storage

**Storage:**  
Store at -80°C.

**Storage Buffer:**  
PBS Only

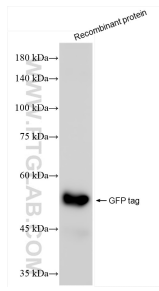
For technical support and original validation data for this product please contact:

T: 1 (888) 4PTGLAB (1-888-478-4522) (toll free in USA), or 1(312) 455-8498 (outside USA)

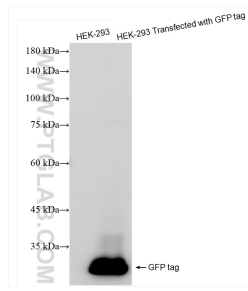
E: [proteintech@ptglab.com](mailto:proteintech@ptglab.com)  
W: [ptglab.com](http://ptglab.com)

**This product is exclusively available under Proteintech Group brand and is not available to purchase from any other manufacturer.**

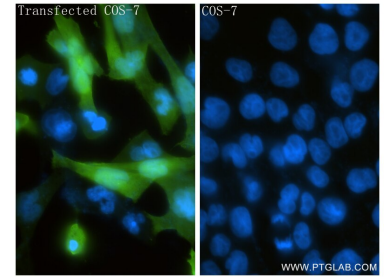
## Selected Validation Data



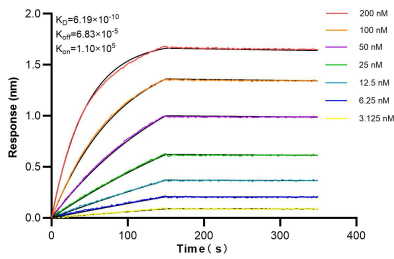
Recombinant protein were subjected to SDS PAGE followed by western blot with 81835-2-RR (GFP tag antibody) at dilution of 1:10000 incubated at room temperature for 1.5 hours. This data was developed using the same antibody clone with 81835-2-PBS in a different storage buffer formulation.



Transfected HEK-293 cells were subjected to SDS PAGE followed by western blot with 81835-2-RR (GFP tag antibody) at dilution of 1:10000 incubated at room temperature for 1.5 hours. This data was developed using the same antibody clone with 81835-2-PBS in a different storage buffer formulation.



Immunofluorescent analysis of (4% PFA) fixed Transfected COS-7 cells using GFP tag antibody (81835-2-RR, Clone: 241614B3 ) at dilution of 1:250 and CoraLite®488-Conjugated Goat Anti-Rabbit IgG(H+L) (SA00013-2). This data was developed using the same antibody clone with 81835-2-PBS in a different storage buffer formulation.



Biolayer interferometry (BLI) kinetic assays of 81835-2-RR against Aequorea victoria GFP tag were performed. The affinity constant is 0.619 nM.