

For Research Use Only

CHMP4B Recombinant antibody

Catalog Number: 81691-2-RR



Basic Information

Catalog Number: 81691-2-RR	GenBank Accession Number: BC033859	Purification Method: Protein A purification
Size: 100ul , Concentration: 1000 µg/ml by Nanodrop;	GeneID (NCBI): 128866	CloneNo.: 2N22
Source: Rabbit	UNIPROT ID: Q9H444	Recommended Dilutions: WB 1:2000-1:10000
Isotype: IgG	Full Name: chromatin modifying protein 4B	
Immunogen Catalog Number: AG4544	Calculated MW: 224 aa, 25 kDa	
	Observed MW: 25 kDa	

Applications

Tested Applications: WB, FC (Intra), ELISA	Positive Controls: WB : Jurkat cells, HeLa cells, HuH-7 cells, C2C12 cells
Species Specificity: human, mouse	

Background Information

CHMP4B (charged multivesicular body protein 4b) is a human homologue of yeast Snf7p (also named Vps32p) and a member of CHMP family which is implicated in multivesicular body (MVB) sorting. The CHMP proteins are components of ESCRT-III (endosomal sorting complex required for transport III), a complex involved in degradation of surface receptor proteins and formation of endocytic multivesicular bodies. Among seven CHMP family members, only CHMP4 has been found to interact with Alix, a multifunctional adaptor protein in various cellular functions. This antibody is highly specific to the CHMP4B and it doesn't cross-react with other CHMPs as well as other CHMP4s (CHMP4A and CHMP4C). CHMP4B can be detected 25-33 kDa by post-translational modification (PMID:26490837).

Storage

Storage:
Store at -20°C. Stable for one year after shipment.
Storage Buffer:
PBS with 0.02% sodium azide and 50% glycerol pH 7.3.
Aliquoting is unnecessary for -20°C storage

*** 20ul sizes contain 0.1% BSA

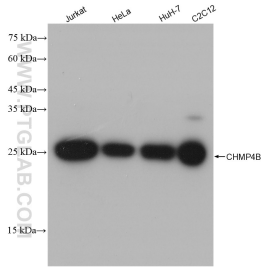
For technical support and original validation data for this product please contact:

T: 1 (888) 4PTGLAB (1-888-478-4522) (toll free
in USA), or 1(312) 455-8498 (outside USA)

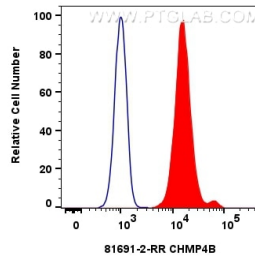
E: proteintech@ptglab.com
W: ptglab.com

This product is exclusively available under Proteintech Group brand and is not available to purchase from any other manufacturer.

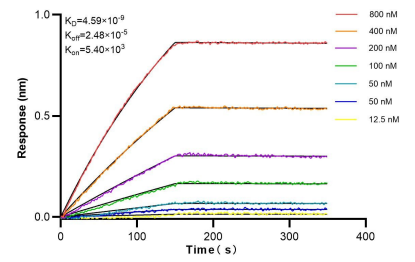
Selected Validation Data



Various lysates were subjected to SDS PAGE followed by western blot with 81691-2-RR (CHMP4B antibody) at dilution of 1:5000 incubated at room temperature for 1.5 hours.



1×10^6 HepG2 cells were intracellularly stained with 0.25 ug CHMP4B Recombinant antibody (81691-2-RR, Clone:2N22) and CoraLite@488-Conjugated AffiniPure Goat Anti-Rabbit IgG(H+L) (SA00013-2)(red), or 0.25 ug Isotype Control (blue). Cells were fixed with 4% PFA and permeabilized with Flow Cytometry Perm Buffer (PF00011-C).



Bi-layer interferometry (BLI) kinetic assays of 81691-2-RR against Human CHMP4B were performed. The affinity constant is 4.59 nM.