

For Research Use Only

# SNAI1 Recombinant antibody, PBS Only (Capture)



Catalog Number: 81584-4-PBS

## Basic Information

<b>Catalog Number:</b> 81584-4-PBS	<b>GenBank Accession Number:</b> BC012910	<b>Purification Method:</b> Protein A purification
<b>Size:</b> 100ug, Concentration: 1 mg/ml by Nanodrop;	<b>GeneID (NCBI):</b> 6615	<b>CloneNo.:</b> 240164C2
<b>Source:</b> Rabbit	<b>UNIPROT ID:</b> O95863	
<b>Isotype:</b> IgG	<b>Full Name:</b> snail homolog 1 (Drosophila)	
<b>Immunogen Catalog Number:</b> AG24248	<b>Calculated MW:</b> 264 aa, 29 kDa	

## Applications

**Tested Applications:**  
IF/ICC, Cytometric bead array, Sandwich ELISA, Indirect ELISA, Sample test

**Species Specificity:**  
human, mouse, rat

## Product Information

81584-4-PBS targets SNAI1 as part of a matched antibody pair:

MP00343-2: 81584-4-PBS capture and 81584-3-PBS detection (validated in Cytometric bead array, Sandwich ELISA)

Unconjugated rabbit recombinant monoclonal antibody in PBS only (BSA and azide free) storage buffer at a concentration of 1 mg/mL, ready for conjugation. Created using Proteintech's proprietary in-house recombinant technology. Recombinant production enables unrivalled batch-to-batch consistency, easy scale-up, and future security of supply.

This conjugation ready format makes antibodies ideal for use in many applications including: ELISAs, multiplex assays requiring matched pairs, mass cytometry, and multiplex imaging applications. Antibody use should be optimized by the end user for each application and assay.

## Storage

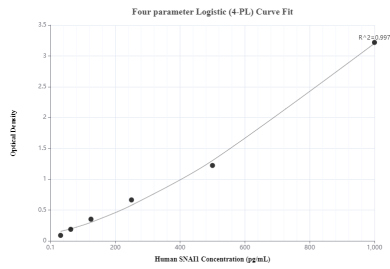
**Storage:**  
Store at -80°C.

**Storage Buffer:**  
PBS Only

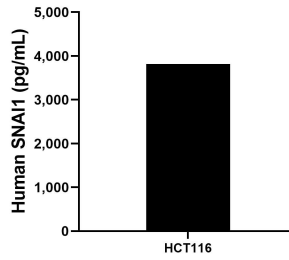
For technical support and original validation data for this product please contact:  
T: 1 (888) 4PTGLAB (1-888-478-4522) (toll free in USA), or 1(312) 455-8498 (outside USA)      E: proteintech@ptglab.com  
W: ptglab.com

**This product is exclusively available under Proteintech Group brand and is not available to purchase from any other manufacturer.**

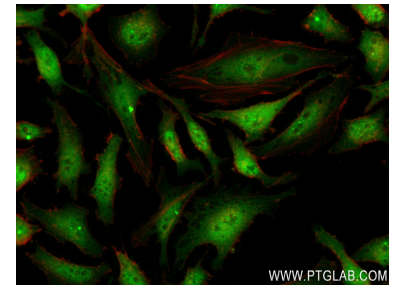
## Selected Validation Data



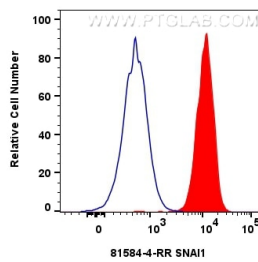
Sandwich ELISA standard curve of MP00343-2, Human SNAI1 Recombinant Matched Antibody Pair - PBS only. 81584-4-PBS was coated to a plate as the capture antibody and incubated with serial dilutions of standard Ag24248. 81584-3-PBS was HRP conjugated as the detection antibody. Range: 31.25-1000 pg/mL.



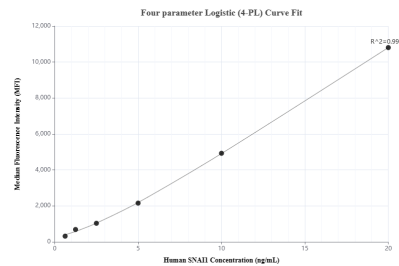
The mean SNAI1 concentration was determined to be 3,819.6 pg/mL in HCT116 cell extract based on 3.0 mg/mL extract load.



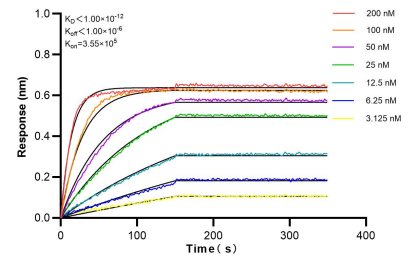
Immunofluorescent analysis of (4% PFA) fixed HeLa cells using SNAI1 antibody (81584-4-RR, Clone: 240164C2) at dilution of 1:400 and CoraLite®488-Conjugated AffiniPure Goat Anti-Rabbit IgG(H+L) (SA00013-2), CL594-Phalloidin (red). This data was developed using the same antibody clone with 81584-4-PBS in a different storage buffer formulation.



1x10<sup>6</sup> A549 cells were intracellularly stained with 0.25 ug SNAI1 Recombinant antibody (81584-4-RR, Clone:240164C2) and CoraLite®488-Conjugated AffiniPure Goat Anti-Rabbit IgG(H+L) (SA00013-2)(red), or 0.25 ug Rabbit IgG control Rabbit PolyAb (30000-0-AP) (blue). Cells were fixed and permeabilized with Transcription Factor Staining Buffer Kit (PF00011). This data was developed using the same antibody clone with 81584-4-PBS in a different storage buffer



Cytometric bead array standard curve of MP00343-2, SNAI1 Recombinant Matched Antibody Pair, PBS Only. Capture antibody: 81584-4-PBS. Detection antibody: 81584-3-PBS. Standard: Ag24248. Range: 0.625-20 ng/mL.



Biolayer interferometry (BLI) kinetic assays of 81584-4-RR against Human SNAI1 were performed. The affinity constant is below 1 pM.