

For Research Use Only

Phospho-PKC Alpha (Thr638) Recombinant antibody

Catalog Number: 81575-2-RR



Basic Information

Catalog Number: 81575-2-RR	GenBank Accession Number: AK055431	Purification Method: Protein A purification
Size: 100ul , Concentration: 1000 µg/ml by Nanodrop;	GeneID (NCBI): 5578	CloneNo.: 241844A10
Source: Rabbit	UNIPROT ID: P17252	Recommended Dilutions: WB 1:1000-1:4000
Isotype: IgG	Full Name: protein kinase C, alpha	
	Calculated MW: 77 kDa	
	Observed MW: 77 kDa	

Applications

Tested Applications: WB, ELISA	Positive Controls: WB : THP-1 cells, λ phosphatase treated THP-1 cells
Species Specificity: human	

Background Information

PKCs are a family of serine/threonine kinases involved in various processes in cells including proliferation, differentiation, cell survival, and apoptosis. PKC family is composed of three different subgroups: conventional (cPKC), the novel (nPKC) and atypical (aPKC). PKC α , β 1, β 2, and γ belong to cPKC, PKC δ , ϵ , η and θ are nPKC, whereas aPKC comprises of PKC ζ and λ /i. All PKCs consist of the N-terminal regulatory region and C-terminal catalytic region (kinase domain). PKCs are physiologically activated by various extracellular signals transduced by hormones, growth factors, cytokines or antigens. The presence of activated PKCs on internal membranes leads to the phosphorylation of various interacting proteins. (PMID: 32466765, PMID: 12417016)

Storage

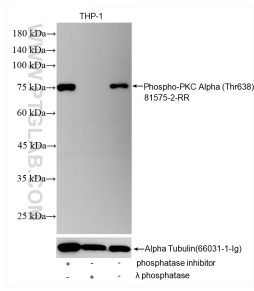
Storage:
Store at -20°C. Stable for one year after shipment.
Storage Buffer:
PBS with 0.02% sodium azide and 50% glycerol pH 7.3.
Aliquoting is unnecessary for -20°C storage

*** 20ul sizes contain 0.1% BSA

For technical support and original validation data for this product please contact:
T: 1 (888) 4PTGLAB (1-888-478-4522) (toll free in USA), or 1(312) 455-8498 (outside USA)
E: proteintech@ptglab.com
W: ptglab.com

This product is exclusively available under Proteintech Group brand and is not available to purchase from any other manufacturer.

Selected Validation Data



Non-treated THP-1 cells, phosphatase inhibitor treated THP-1 cells and λ phosphatase treated THP-1 cells were subjected to SDS PAGE followed by western blot with 81575-2-RR (Phospho-PKC Alpha (Thr638) antibody) at dilution of 1:2000 incubated at room temperature for 1.5 hours. The membrane was stripped and re-blotted with Alpha Tubulin (66031-1-Ig) antibody as a loading control.