

For Research Use Only

# MMP2 Recombinant antibody

Catalog Number:81515-2-RR



## Basic Information

<b>Catalog Number:</b> 81515-2-RR	<b>GenBank Accession Number:</b> BC002576	<b>Purification Method:</b> Protein A purification
<b>Size:</b> 100ul , Concentration: 300 µg/ml by Nanodrop;	<b>GeneID (NCBI):</b> 4313	<b>CloneNo.:</b> 240131F5
<b>Source:</b> Rabbit	<b>UNIPROT ID:</b> P08253	<b>Recommended Dilutions:</b> IF/ICC 1:50-1:500
<b>Isotype:</b> IgG	<b>Full Name:</b> matrix metalloproteinase 2 (gelatinase A, 72kDa gelatinase, 72kDa type IV collagenase)	
<b>Immunogen Catalog Number:</b> AG0549	<b>Calculated MW:</b> 72 kDa	
	<b>Observed MW:</b> 62-72 kDa	

## Applications

<b>Tested Applications:</b> IF/ICC, FC (Intra), ELISA	<b>Positive Controls:</b> IF/ICC : HepG2 cells,
<b>Species Specificity:</b> human	

## Background Information

MMP2, also named as CLG4A, Gelatinase Am, TBE-1 and PEX, belongs to the peptidase M10A family. It is ubiquitous metalloproteinase that is involved in diverse functions such as remodeling of the vasculature, angiogenesis, tissue repair, tumor invasion, inflammation, and atherosclerotic plaque rupture. MMP2 contributes to myocardial oxidative stress by regulating the activity of GSK3beta. It cleaves GSK3beta in vitro. MMP2 can be cleaved into PEX chain (~60kd). Western blot analysis showed that the 72 kDa and 62/65 kDa proteinase activities were pro-MMP2 and the active enzyme, respectively (PMID:11112697, PMID: 30867536).

## Storage

**Storage:**  
Store at -20°C. Stable for one year after shipment.  
**Storage Buffer:**  
PBS with 0.02% sodium azide and 50% glycerol pH 7.3.  
Aliquoting is unnecessary for -20°C storage

\*\*\* 20ul sizes contain 0.1% BSA

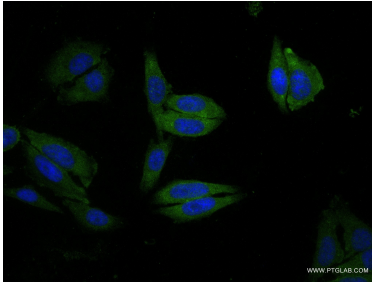
For technical support and original validation data for this product please contact:

T: 1 (888) 4PTGLAB (1-888-478-4522) (toll free in USA), or 1(312) 455-8498 (outside USA)

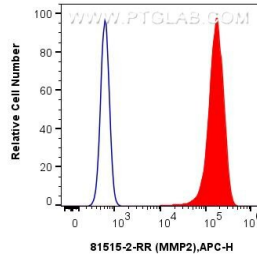
E: proteintech@ptglab.com  
W: ptglab.com

This product is exclusively available under Proteintech Group brand and is not available to purchase from any other manufacturer.

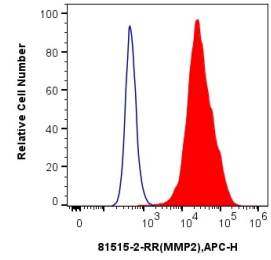
## Selected Validation Data



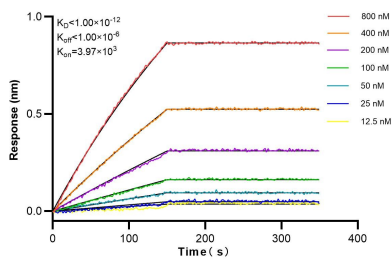
Immunofluorescent analysis of (-20°C Ethanol) fixed HepG2 cells using MMP2 antibody (81515-2-RR, Clone: 240131F5) at dilution of 1:100 and CoraLite®488-Conjugated AffiniPure Goat Anti-Rabbit IgG(H+L) (SA00013-2).



$1 \times 10^6$  HeLa cells were intracellularly stained with 0.25  $\mu$ g MMP2 Recombinant antibody (81515-2-RR, Clone:240131F5) and APC-Conjugated AffiniPure Goat Anti-Rabbit IgG(H+L)(red), or 0.25  $\mu$ g Isotype Control (blue). Cells were fixed with 4% PFA and permeabilized with Flow Cytometry Perm Buffer (PF00011-C).



$1 \times 10^6$  HT-29 cells were intracellularly stained with 0.25  $\mu$ g MMP2 Recombinant Antibody (81515-2-RR, Clone:240131F5) and APC-Conjugated AffiniPure Goat Anti-Rabbit IgG(H+L)(red), or 0.25  $\mu$ g Isotype Control (blue). Cells were fixed with 4% PFA and permeabilized with Flow Cytometry Perm Buffer (PF00011-C).



Biolayer interferometry (BLI) kinetic assays of 81515-2-RR against Human MMP2 were performed. The affinity constant is below 1 pM.