

For Research Use Only

# GLUT1 Recombinant antibody, PBS Only

Catalog Number: 81463-1-PBS



## Basic Information

<b>Catalog Number:</b> 81463-1-PBS	<b>GenBank Accession Number:</b> BC121804	<b>Purification Method:</b> Protein A purification
<b>Size:</b> 100ug, Concentration: 1mg/ml by Nanodrop;	<b>GeneID (NCBI):</b> 6513	<b>CloneNo.:</b> 6F14
<b>Source:</b> Rabbit	<b>UNIPROT ID:</b> P11166	
<b>Isotype:</b> IgG	<b>Full Name:</b> solute carrier family 2 (facilitated glucose transporter), member 1	
<b>Immunogen Catalog Number:</b> AG16282	<b>Calculated MW:</b> 492 aa, 54 kDa	
	<b>Observed MW:</b> 45-55 kDa	

## Applications

**Tested Applications:**  
WB, IHC, Indirect ELISA

**Species Specificity:**  
human

## Background Information

GLUT1, also known as SLC2A1, is a ubiquitously expressed glucose transporter and is responsible for the basal level of glucose uptake in most cell types. Human erythrocytes express the highest level of GLUT1. Defects in SLC2A1 are the cause of GLUT1 deficiency syndrome type 1 and type 2. High expression of GLUT1 has been reported to be a reliable immunohistochemical marker for juvenile hemangiomas. GLUT1 protein may appear as two or more distinct forms among 43 kDa to 55 kDa due to the different glycosylation states. And the conversion of the highly glycosylated form of GLUT1 to a less glycosylated form has been reported to correlate with differentiation (PMID: 8263524, 23302780).

## Storage

**Storage:**  
Store at -80°C.

**Storage Buffer:**  
PBS Only

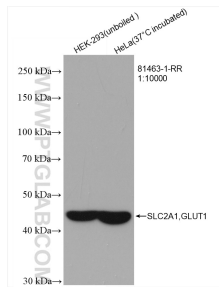
For technical support and original validation data for this product please contact:

T: 1 (888) 4PTGLAB (1-888-478-4522) (toll free in USA), or 1(312) 455-8498 (outside USA)

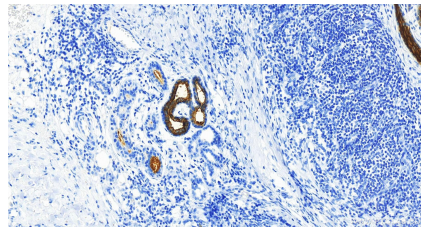
E: [proteintech@ptglab.com](mailto:proteintech@ptglab.com)  
W: [ptglab.com](http://ptglab.com)

This product is exclusively available under Proteintech Group brand and is not available to purchase from any other manufacturer.

## Selected Validation Data



Various lysates were subjected to SDS PAGE followed by western blot with 81463-1-RR (SLC2A1, GLUT1 antibody) at dilution of 1:10000 incubated at room temperature for 1.5 hours. This data was developed using the same antibody clone with 81463-1-PBS in a different storage buffer formulation.



Immunohistochemical analysis of paraffin-embedded skin cancer slide using 81463-1-RR (GLUT1 antibody) at dilution of 1:2000 (under 20x lens). Heat mediated antigen retrieval with Tris-EDTA buffer (pH 9.0). This data was developed using the same antibody clone with 81463-1-PBS in a different storage buffer formulation.