

For Research Use Only

P16-INK4A Recombinant antibody, PBS Only (Capture)

Catalog Number:81373-6-PBS



Basic Information

Catalog Number: 81373-6-PBS	GenBank Accession Number: BC021998	Purification Method: Protein A purification
Size: 100ug , Concentration: 1 mg/ml by Nanodrop;	GeneID (NCBI): 1029	CloneNo.: 241438G3
Source: Rabbit	UNIPROT ID: Q8N726	
Isotype: IgG	Full Name: cyclin-dependent kinase inhibitor 2A (melanoma, p16, inhibits CDK4)	
Immunogen Catalog Number: AG1328	Calculated MW: 16 kDa	

Applications

Tested Applications:
Cytometric bead array, Sandwich ELISA, Indirect ELISA, Sample test

Species Specificity:
human

Product Information

81373-6-PBS targets P16-INK4A as part of a matched antibody pair:

MP01135-2: 81373-6-PBS capture and 81373-3-PBS detection (validated in Cytometric bead array)

MP01135-3: 81373-6-PBS capture and 81373-5-PBS detection (validated in Cytometric bead array)

MP01135-4: 81373-6-PBS capture and 81373-4-PBS detection (validated in Sandwich ELISA)

Unconjugated rabbit recombinant monoclonal antibody in PBS only (BSA and azide free) storage buffer at a concentration of 1 mg/mL, ready for conjugation. Created using Proteintech's proprietary in-house recombinant technology. Recombinant production enables unrivalled batch-to-batch consistency, easy scale-up, and future security of supply.

This conjugation ready format makes antibodies ideal for use in many applications including: ELISAs, multiplex assays requiring matched pairs, mass cytometry, and multiplex imaging applications. Antibody use should be optimized by the end user for each application and assay.

Storage

Storage:
Store at -80°C.

Storage Buffer:
PBS Only

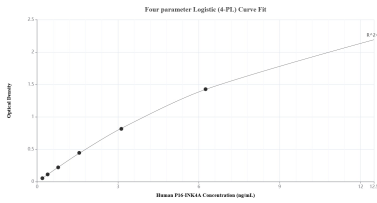
For technical support and original validation data for this product please contact:

T: 1 (888) 4PTGLAB (1-888-478-4522) (toll free in USA), or 1(312) 455-8498 (outside USA)

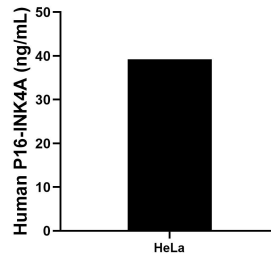
E: proteintech@ptglab.com
W: ptglab.com

This product is exclusively available under Proteintech Group brand and is not available to purchase from any other manufacturer.

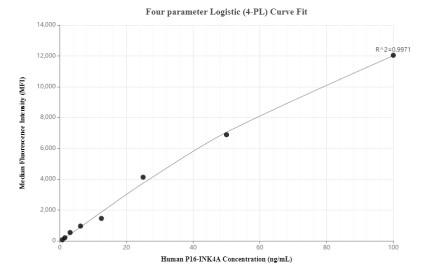
Selected Validation Data



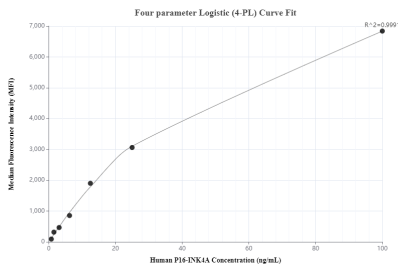
Sandwich ELISA standard curve of MP01135-4, Human P16-INK4A Recombinant Matched Antibody Pair - PBS only. 81373-6-PBS was coated to a plate as the capture antibody and incubated with serial dilutions of standard Ag1328. 81373-4-PBS was HRP conjugated as the detection antibody. Range: 0.195-12.5 ng/mL



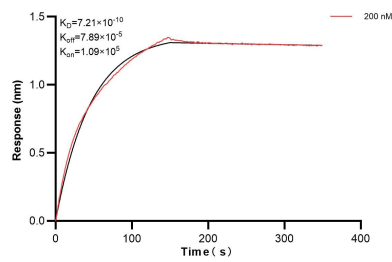
The mean P16-INK4A concentration was determined to be 39.21 ng/mL in HeLa cell extract based on a 2.80 mg/mL extract load.



Cytometric bead array standard curve of MP01135-2, P16-INK4A Recombinant Matched Antibody Pair, PBS Only. Capture antibody: 81373-6-PBS. Detection antibody: 81373-3-PBS. Standard: Ag1328. Range: 0.781-100 ng/mL



Cytometric bead array standard curve of MP01135-3, P16-INK4A Recombinant Matched Antibody Pair, PBS Only. Capture antibody: 81373-6-PBS. Detection antibody: 81373-5-PBS. Standard: Ag1328. Range: 0.781-100 ng/mL



Biolayer interferometry (BLI) kinetic assay of 81373-6-PBS against Human P16-INK4A was performed. The affinity constant is 0.721 nM.