

For Research Use Only

EEA1 Recombinant antibody, PBS Only



Catalog Number: 81245-1-PBS

Basic Information

Catalog Number: 81245-1-PBS	GenBank Accession Number: NM_003566	Purification Method: Protein A purification
Size: 100ug , Concentration: 1 mg/ml by Nanodrop;	GeneID (NCBI): 8411	CloneNo.: 2C11
Source: Rabbit	UNIPROT ID: Q15075	
Isotype: IgG	Full Name: early endosome antigen 1	
Immunogen Catalog Number: AG28814	Calculated MW: 162 kDa	
	Observed MW: 162 kDa	

Applications

Tested Applications:
WB, Indirect ELISA

Species Specificity:
Human, Mouse, Rat

Background Information

Early endosome antigen 1 (EEA1) is a marker of early endosomes and has an important role in endosomal trafficking. EEA1 contains coiled-coil regions and an FYVE-type zinc finger which interacts with phosphatidylinositol-3-phosphate. EEA1 functions as a Rab5 effector, mediates endosome docking and, together with SNAREs, leads to membrane fusion.

Storage

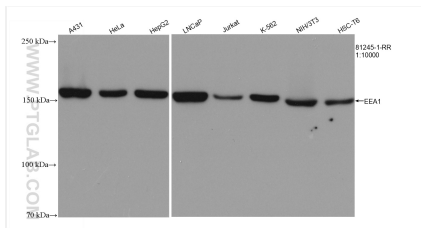
Storage:
Store at -80°C.

Storage Buffer:
PBS Only

For technical support and original validation data for this product please contact:
T: 1 (888) 4PTGLAB (1-888-478-4522) (toll free in USA), or 1(312) 455-8498 (outside USA) E: proteintech@ptglab.com
W: ptglab.com

This product is exclusively available under Proteintech Group brand and is not available to purchase from any other manufacturer.

Selected Validation Data



Various lysates were subjected to SDS PAGE followed by western blot with 81245-1-RR (EEA1 antibody) at dilution of 1:10000 incubated at room temperature for 1.5 hours. This data was developed using the same antibody clone with 81245-1-PBS in a different storage buffer formulation.