

For Research Use Only

Phospho-p38 MAPK (Thr180/Tyr182) Recombinant antibody, PBS Only

Catalog Number: 81212-2-PBS



Basic Information

Catalog Number: 81212-2-PBS	GenBank Accession Number: BC031574	Purification Method: Protein A purification
Size: 100ug, Concentration: 1 mg/ml by Nanodrop;	GeneID (NCBI): 1432	CloneNo.: 242308D3
Source: Rabbit	UNIPROT ID: Q16539	
Isotype: IgG	Full Name: mitogen-activated protein kinase 14	
	Calculated MW: 360 aa, 41 kDa	
	Observed MW: 38-42 kDa	

Applications

Tested Applications:
WB, Indirect ELISA

Species Specificity:
human, mouse

Background Information

A stress-activated serine/threonine protein kinase, p38 mitogen-activated protein kinase (p38 MAPK), belongs to the MAP kinase superfamily. Diverse extracellular stimuli, including ultraviolet light, irradiation, heat shock, high osmotic stress, proinflammatory cytokines and certain mitogens, trigger a stress-regulated protein kinase cascade culminating in activation of p38 MAPK through phosphorylation on a TGY motif within the kinase activation loop. The p38 MAPK undergoes dual phosphorylation at Thr182 and Tyr180 in the Thr-Gly-Tyr activation loop by MAP kinase kinase 6 (MKK6). Upon activation, p38 MAPK phosphorylates multiple substrates, including MAPK activated protein kinase 2 (MAPKAPK2) and activating transcription factor 2 (ATF-2). (PMID: 26901653, PMID: 10807318)

Storage

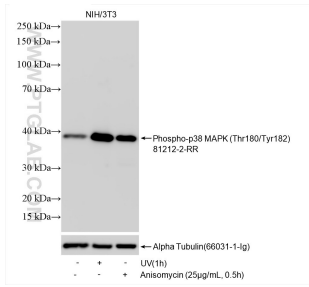
Storage:
Store at -80°C.

Storage Buffer:
PBS Only

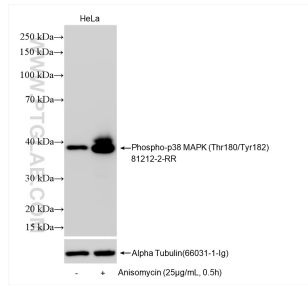
For technical support and original validation data for this product please contact:
T: 1 (888) 4PTGLAB (1-888-478-4522) (toll free in USA), or 1(312) 455-8498 (outside USA) E: proteintech@ptglab.com
W: ptglab.com

This product is exclusively available under Proteintech Group brand and is not available to purchase from any other manufacturer.

Selected Validation Data



Non-treated NIH/3T3 cells, UV treated and Anisomycin treated NIH/3T3 cells were subjected to SDS PAGE followed by western blot with 81212-2-RR (Phospho-p38 MAPK (Thr180/Tyr182) antibody) at dilution of 1:5000 incubated at room temperature for 1.5 hours. The membrane was stripped and re-blotted with Alpha Tubulin (66031-1-Ig) antibody as a loading control. This data was developed using the same antibody clone with 81212-2-PBS in a different storage



Non-treated HeLa cells and Anisomycin treated HeLa cells were subjected to SDS PAGE followed by western blot with 81212-2-RR (Phospho-p38 MAPK (Thr180/Tyr182) antibody) at dilution of 1:5000 incubated at room temperature for 1.5 hours. The membrane was stripped and re-blotted with Alpha Tubulin (66031-1-Ig) antibody as a loading control. This data was developed using the same antibody clone with 81212-2-PBS in a different storage buffer formulation.