

For Research Use Only

# IDH1 Recombinant antibody, PBS Only



Catalog Number: 81176-1-PBS

## Basic Information

<b>Catalog Number:</b> 81176-1-PBS	<b>GenBank Accession Number:</b> BC012846	<b>Purification Method:</b> Protein A purification
<b>Size:</b> 100ug , Concentration: 1mg/ml by Nanodrop;	<b>GeneID (NCBI):</b> 3417	<b>CloneNo.:</b> 6L18
<b>Source:</b> Rabbit	<b>UNIPROT ID:</b> O75874	
<b>Isotype:</b> IgG	<b>Full Name:</b> isocitrate dehydrogenase 1 (NADP+), soluble	
<b>Immunogen Catalog Number:</b> AG19749	<b>Calculated MW:</b> 414 aa, 47 kDa	
	<b>Observed MW:</b> 46 kDa	

## Applications

**Tested Applications:**  
WB, Indirect ELISA

**Species Specificity:**  
Human, mouse, rat

## Background Information

IDH1, also named as PICD and IDP, belongs to the isocitrate and isopropylmalate dehydrogenases family. It is a common feature of a major subset of primary human brain cancers. It can form a homodimer(PMID:15173171). IDH1 mutation is always heterozygotic and IDH1 functions as a dimer, theoretically there will be 25% each wild type and mutant homo-dimers and 50% hetero-dimers present in the tumor cells(PMID:21079649).

## Storage

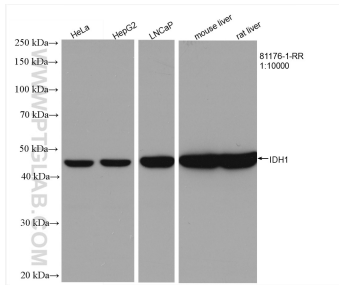
**Storage:**  
Store at -80°C.

**Storage Buffer:**  
PBS Only

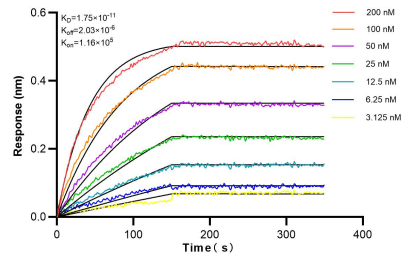
For technical support and original validation data for this product please contact:  
T: 1 (888) 4PTGLAB (1-888-478-4522) (toll free in USA), or 1(312) 455-8498 (outside USA)      E: [proteintech@ptglab.com](mailto:proteintech@ptglab.com)  
W: [ptglab.com](http://ptglab.com)

This product is exclusively available under Proteintech Group brand and is not available to purchase from any other manufacturer.

## Selected Validation Data



Various lysates were subjected to SDS PAGE followed by western blot with 81176-1-RR (IDH1 antibody) at dilution of 1:10000 incubated at room temperature for 1.5 hours. This data was developed using the same antibody clone with 81176-1-PBS in a different storage buffer formulation.



Biolayer interferometry (BLI) kinetic assays of 81176-1-RR against Human IDH1 were performed. The affinity constant is 17.5 pM.