

For Research Use Only

IFITM3 Recombinant antibody

Catalog Number: 81135-3-RR



Basic Information

Catalog Number: 81135-3-RR	GenBank Accession Number: BC006794	Purification Method: Protein A purification
Size: 100ul , Concentration: 1000 µg/ml by Nanodrop;	GeneID (NCBI): 10410	CloneNo.: 242056C9
Source: Rabbit	UNIPROT ID: Q01628	Recommended Dilutions: WB 1:1000-1:10000 IF/ICC 1:250-1:1000
Isotype: IgG	Full Name: interferon induced transmembrane protein 3 (1-8U)	
Immunogen Catalog Number: AG2285	Calculated MW: 133 aa, 15 kDa	
	Observed MW: 15-20 kDa	

Applications

Tested Applications: WB, IF/ICC, FC (Intra), ELISA	Positive Controls: WB : HeLa cells, HepG2 cells, THP-1 cells IF/ICC : HepG2 cells,
Species Specificity: human	

Background Information

IFITM3, also named as interferon-inducible protein 1-8U, belongs to the CD225 family. It is IFN-induced antiviral protein that mediates cellular innate immunity to at least three major human pathogens, namely influenza A H1N1 virus, West Nile virus (WNV), and dengue virus, by inhibiting the early steps of replication. IFITM3 is identified as interferon-induced cellular proteins that restrict infections by retroviruses and filoviruses and of influenza virus and flaviviruses, respectively. IFITM3, the most potent antiviral IFITM, was found to inhibit an uncharacterized early infectious event after VSV endocytosis, but before primary transcription of its viral genome. IFITM proteins are viral restriction factors that can inhibit infection mediated by the influenza A virus (IAV) hemagglutinin (HA) protein. They differentially restrict the entry of a broad range of enveloped viruses, and modulate cellular tropism independently of viral receptor expression.

Storage

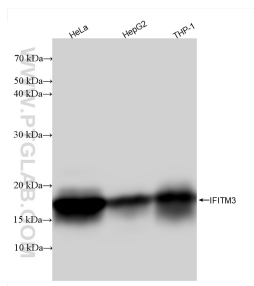
Storage:
Store at -20°C. Stable for one year after shipment.
Storage Buffer:
PBS with 0.02% sodium azide and 50% glycerol pH 7.3.
Aliquoting is unnecessary for -20°C storage

*** 20ul sizes contain 0.1% BSA

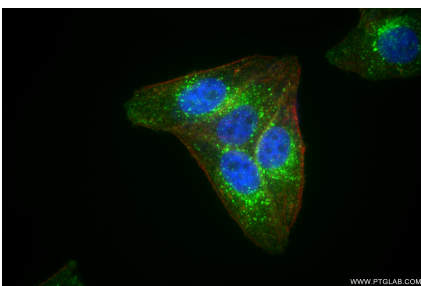
For technical support and original validation data for this product please contact:
T: 1 (888) 4PTGLAB (1-888-478-4522) (toll free in USA), or 1(312) 455-8498 (outside USA)
E: proteintech@ptglab.com
W: ptglab.com

This product is exclusively available under Proteintech Group brand and is not available to purchase from any other manufacturer.

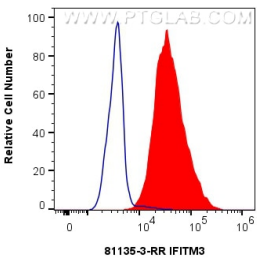
Selected Validation Data



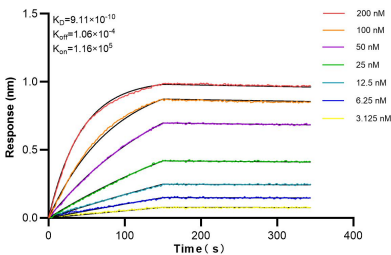
Various lysates were subjected to SDS PAGE followed by western blot with 81135-3-RR (IFITM3 antibody) at dilution of 1:20000 incubated at room temperature for 1.5 hours.



Immunofluorescent analysis of (4% PFA) fixed HepG2 cells using IFITM3 antibody (81135-3-RR, Clone: 242056C9) at dilution of 1:500 and CoraLite®488-Conjugated Goat Anti-Rabbit IgG(H+L) (SA00013-2), CL594-Phalloidin (red).



1x10⁶ MCF-7 cells were intracellularly stained with 0.25 ug IFITM3 Recombinant antibody (81135-3-RR, Clone:242056C9) and CoraLite®488-Conjugated Goat Anti-Rabbit IgG(H+L) (SA00013-2) (red), or 0.25 ug Rabbit IgG Isotype Control RecAb (98136-1-RR, Clone: 240953C9) (blue). Cells were fixed with 4% PFA and permeabilized with Flow Cytometry Perm Buffer (PF00011-C).



Bioluminescence resonance transfer (BLI) kinetic assays of 81135-3-RR against Human IFITM3 were performed. The affinity constant is 0.911 nM.