

For Research Use Only

IL-6 Recombinant antibody, PBS Only (Capture)

Catalog Number: 81077-1-PBS



Basic Information

Catalog Number: 81077-1-PBS	GenBank Accession Number: BC015511	Purification Method: Protein A purification
Size: 100ug, Concentration: 1mg/ml by Nanodrop;	GeneID (NCBI): 3569	CloneNo.: 2E9
Source: Rabbit	ENSEMBL Gene ID: ENSG00000136244	
Isotype: IgG	UNIPROT ID: P05231	
Immunogen Catalog Number: AG10565	Full Name: interleukin 6 (interferon, beta 2)	
	Calculated MW: 212 aa, 24 kDa	
	Observed MW: 20 kDa	

Applications

Tested Applications:
WB, Cytometric bead array, Indirect ELISA

Species Specificity:
human

Product Information

81077-1-PBS targets IL-6 as part of a matched antibody pair:

MP80002-1: 81077-1-PBS capture and 68659-10-PBS detection (validated in Cytometric bead array)

Unconjugated rabbit recombinant monoclonal antibody in PBS only (BSA and azide free) storage buffer at a concentration of 1 mg/mL, ready for conjugation. Created using Proteintech's proprietary in-house recombinant technology. Recombinant production enables unrivalled batch-to-batch consistency, easy scale-up, and future security of supply.

This conjugation ready format makes antibodies ideal for use in many applications including: ELISAs, multiplex assays requiring matched pairs, mass cytometry, and multiplex imaging applications. Antibody use should be optimized by the end user for each application and assay.

Storage

Storage:
Store at -80°C.

Storage Buffer:
PBS Only

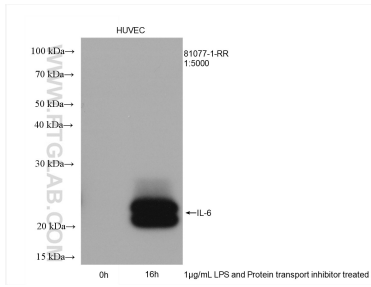
For technical support and original validation data for this product please contact:

T: 1 (888) 4PTGLAB (1-888-478-4522) (toll free in USA), or 1(312) 455-8498 (outside USA)

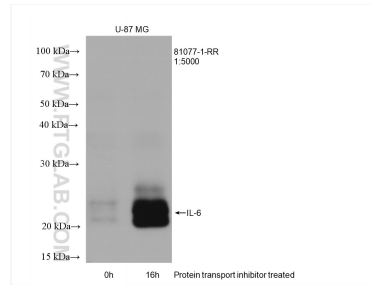
E: proteintech@ptglab.com
W: ptglab.com

This product is exclusively available under Proteintech Group brand and is not available to purchase from any other manufacturer.

Selected Validation Data

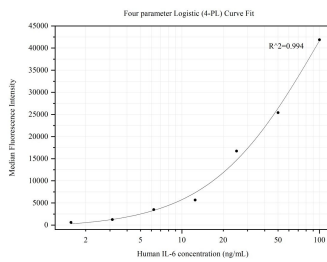


HUVEC cells were subjected to SDS PAGE followed by western blot with 81077-1-RR (IL-6 antibody) at dilution of 1:5000 incubated at room temperature for 1.5 hours. This data was developed using the same antibody clone with 81077-1-PBS in a different storage buffer formulation.

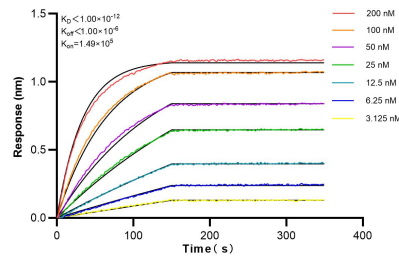


Protein transport inhibitor treated U-87 MG cells were subjected to SDS PAGE followed by western blot with 81077-1-RR (IL-6 antibody) at dilution of 1:5000 incubated at room temperature for 1.5 hours. This data was developed using the same antibody clone with 81077-1-PBS in a different storage buffer formulation.

Cytometric bead array standard curve of MP80002-1, IL-6 Hybrid Matched Antibody Pair, PBS Only. Capture antibody: 81077-1-RR. Detection antibody: 68659-10-PBS. Standard:null. Range: 1.563-100 ng/mL



Cytometric bead array standard curve of MP80002-1, IL-6 Hybrid Matched Antibody Pair, PBS Only. Capture antibody: 81077-1-PBS. Detection antibody: 68659-10-PBS. Standard:HZ-1019. Range: 1.563-100 ng/mL



Biolayer interferometry (BLI) kinetic assays of 81077-1-RR against Human IL-6 were performed. The affinity constant is below 1 pM.