

For Research Use Only

CP110 Recombinant antibody, PBS Only

Catalog Number: 80965-6-PBS



Basic Information

Catalog Number: 80965-6-PBS	GenBank Accession Number: BC036654	Purification Method: Protein A purification
Size: 100ug , Concentration: 1 mg/ml by Nanodrop;	GeneID (NCBI): 9738	CloneNo.: 242016B2
Source: Rabbit	UNIPROT ID: O43303	
Isotype: IgG	Full Name: CP110 protein	
Immunogen Catalog Number: AG3489	Calculated MW: 991 aa, 111 kDa	
	Observed MW: 113 kDa	

Applications

Tested Applications:
WB, Indirect ELISA

Species Specificity:
human

Background Information

CP110, also named as CCP110 and KIAA0419, is an 110kDa protein. This gene is different to the gene CEP110 (geneID:11064; CNTRL). CP110 is a centriolar protein that positively regulates centriole duplication while restricting centriole elongation and ciliogenesis. And it acts as a key negative regulator of ciliogenesis in collaboration with CEP97 by capping the mother centriole thereby preventing cilia formation.

Storage

Storage:
Store at -80°C.

Storage Buffer:
PBS Only

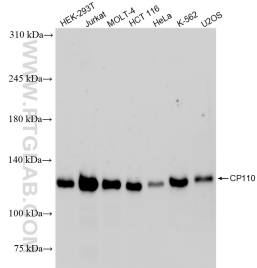
For technical support and original validation data for this product please contact:

T: 1 (888) 4PTGLAB (1-888-478-4522) (toll free in USA), or 1(312) 455-8498 (outside USA)

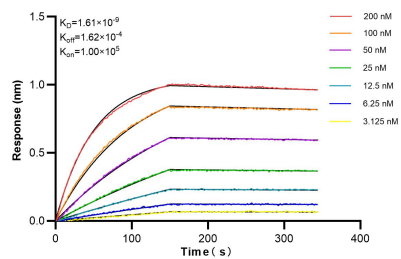
E: proteintech@ptglab.com
W: ptglab.com

This product is exclusively available under Proteintech Group brand and is not available to purchase from any other manufacturer.

Selected Validation Data



Various lysates were subjected to SDS PAGE followed by western blot with 80965-6-RR (CP110 antibody) at dilution of 1:1000 incubated at room temperature for 1.5 hours. This data was developed using the same antibody clone with 80965-6-PBS in a different storage buffer formulation.



Biolayer interferometry (BLI) kinetic assays of 80965-6-RR against Human CP110 were performed. The affinity constant is 1.61 nM.