

For Research Use Only

CP110 Recombinant antibody, PBS Only (Detector)

Catalog Number: 80965-5-PBS



Basic Information

Catalog Number: 80965-5-PBS	GenBank Accession Number: BC036654	Purification Method: Protein A purification
Size: 100ug , Concentration: 1 mg/ml by Nanodrop;	GeneID (NCBI): 9738	CloneNo.: 242016E10
Source: Rabbit	UNIPROT ID: O43303	
Isotype: IgG	Full Name: CP110 protein	
Immunogen Catalog Number: AG3489	Calculated MW: 991 aa, 111 kDa	
	Observed MW: 113 kDa	

Applications

Tested Applications:
WB, IHC, IF/ICC, Sandwich ELISA, Indirect ELISA,
Sample test

Species Specificity:
human

Product Information

80965-5-PBS targets CP110 as part of a matched antibody pair:

MP01447-3: 80965-4-PBS capture and 80965-5-PBS detection (validated in Sandwich ELISA)

Unconjugated rabbit recombinant monoclonal antibody in PBS only (BSA and azide free) storage buffer at a concentration of 1 mg/mL, ready for conjugation. Created using Proteintech's proprietary in-house recombinant technology. Recombinant production enables unrivalled batch-to-batch consistency, easy scale-up, and future security of supply.

This conjugation ready format makes antibodies ideal for use in many applications including: ELISAs, multiplex assays requiring matched pairs, mass cytometry, and multiplex imaging applications. Antibody use should be optimized by the end user for each application and assay.

Background Information

CP110, also named as CCP110 and KIAA0419, is an 110kDa protein. This gene is different to the gene CEP110 (geneID:11064; CNTRL). CP110 is a centriolar protein that positively regulates centriole duplication while restricting centriole elongation and ciliogenesis. And it acts as a key negative regulator of ciliogenesis in collaboration with CEP97 by capping the mother centriole thereby preventing cilia formation.

Storage

Storage:
Store at -80°C.
Storage Buffer:
PBS Only

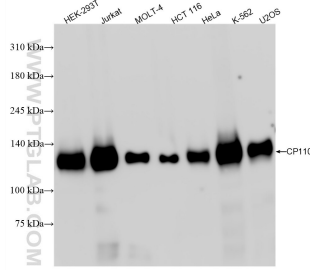
For technical support and original validation data for this product please contact:

T: 1 (888) 4PTGLAB (1-888-478-4522) (toll free
in USA), or 1(312) 455-8498 (outside USA)

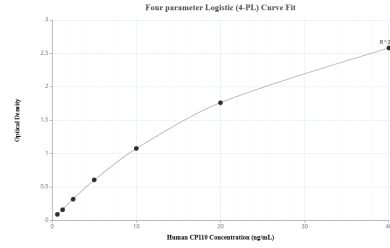
E: proteintech@ptglab.com
W: ptglab.com

This product is exclusively available under Proteintech Group brand and is not available to purchase from any other manufacturer.

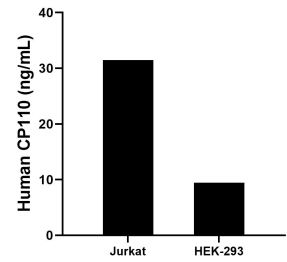
Selected Validation Data



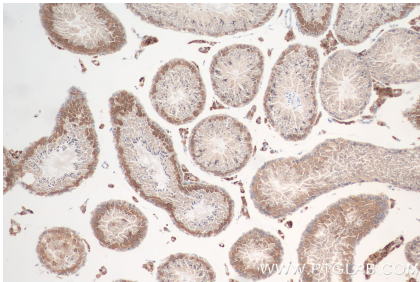
Various lysates were subjected to SDS PAGE followed by western blot with 80965-5-RR (CP110 antibody) at dilution of 1:5000 incubated at room temperature for 1.5 hours. This data was developed using the same antibody clone with 80965-5-PBS in a different storage buffer formulation.



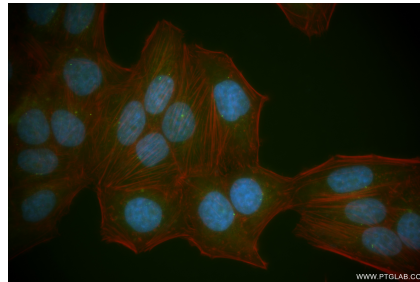
Sandwich ELISA standard curve of MP01447-3, Human CP110 Recombinant Matched Antibody Pair - PBS only. 80965-4-PBS was coated to a plate as the capture antibody and incubated with serial dilutions of standard Ag3489. 80965-5-PBS was HRP conjugated as the detection antibody. Range: 0.625-40 ng/mL



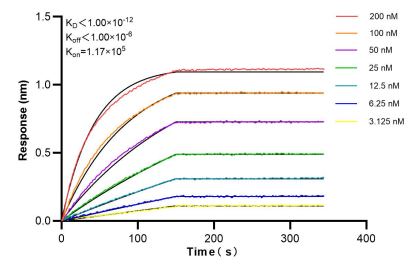
The mean CP110 concentration was determined to be 31.64 ng/mL in Jurkat cell extract based on a 4.2 mg/mL extract load and 9.42 ng/mL in HEK-293 cell extract based on a 1.2 mg/mL extract load.



Immunohistochemical analysis of paraffin-embedded mouse testis tissue slide using 80965-5-RR (CP110 antibody) at dilution of 1:600 (under 10x lens). Heat mediated antigen retrieval with Tris-EDTA buffer (pH 9.0). This data was developed using the same antibody clone with 80965-5-PBS in a different storage buffer formulation.



Immunofluorescent analysis of (4% PFA) fixed HepG2 cells using CP110 antibody (80965-5-RR, Clone: 242016E10) at dilution of 1:500 and Coralite®488-Conjugated Goat Anti-Rabbit IgG(H+L) (SA00013-2), CL594-Phalloidin (red). This data was developed using the same antibody clone with 80965-5-PBS in a different storage buffer formulation.



Bi-layer interferometry (BLI) kinetic assays of 80965-5-RR against Human CP110 were performed. The affinity constant is below 1 pM.