

For Research Use Only

MCP-1/CCL2 Recombinant antibody, PBS Only (Detector)

Catalog Number: 80847-7-PBS



Basic Information

Catalog Number: 80847-7-PBS	GenBank Accession Number: BC009716	Purification Method: Protein A purification
Size: 100ug, Concentration: 1 mg/ml by Nanodrop;	GeneID (NCBI): 6347	CloneNo.: 241165G2
Source: Rabbit	UNIPROT ID: P13500	
Isotype: IgG	Full Name: chemokine (C-C motif) ligand 2	
	Calculated MW: 99 aa, 11 kDa	

Applications

Tested Applications:
Cytometric bead array, Sandwich ELISA, Indirect ELISA,
Sample test

Species Specificity:
human

Product Information

80847-7-PBS targets MCP-1/CCL2 as part of a matched antibody pair:

MP00938-1: 80847-4-PBS capture and 80847-7-PBS detection (validated in Cytometric bead array, Sandwich ELISA)

MP00938-2: 80847-5-PBS capture and 80847-7-PBS detection (validated in Cytometric bead array)

Unconjugated rabbit recombinant monoclonal antibody in PBS only (BSA and azide free) storage buffer at a concentration of 1 mg/mL, ready for conjugation. Created using Proteintech's proprietary in-house recombinant technology. Recombinant production enables unrivalled batch-to-batch consistency, easy scale-up, and future security of supply.

This conjugation ready format makes antibodies ideal for use in many applications including: ELISAs, multiplex assays requiring matched pairs, mass cytometry, and multiplex imaging applications. Antibody use should be optimized by the end user for each application and assay.

Storage

Storage:
Store at -80°C.
Storage Buffer:
PBS Only

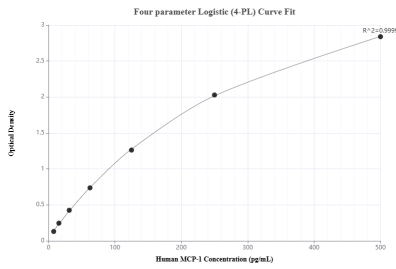
For technical support and original validation data for this product please contact:

T: 1 (888) 4PTGLAB (1-888-478-4522) (toll free
in USA), or 1(312) 455-8498 (outside USA)

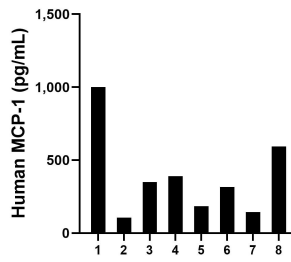
E: proteintech@ptglab.com
W: ptglab.com

This product is exclusively available under Proteintech Group brand and is not available to purchase from any other manufacturer.

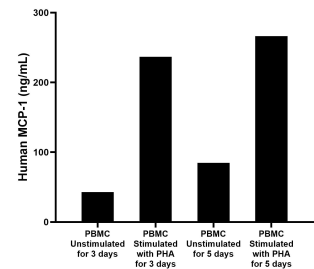
Selected Validation Data



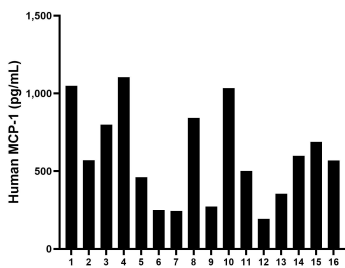
Sandwich ELISA standard curve of MP00938-1, Human MCP-1 Recombinant Matched Antibody Pair - PBS only. 80847-4-PBS was coated to a plate as the capture antibody and incubated with serial dilutions of standard Eg31375. 80847-7-PBS was HRP conjugated as the detection antibody. Range: 7.8-500 pg/mL



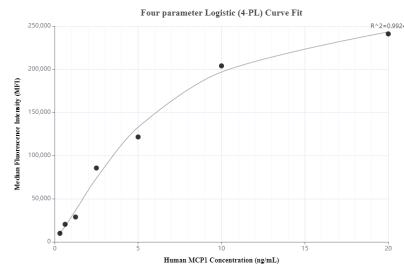
Urine of eight individual healthy human donors was measured. The human MCP-1 concentration of detected samples was determined to be 385.1 pg/mL with a range of 106.1 - 999.8 pg/mL



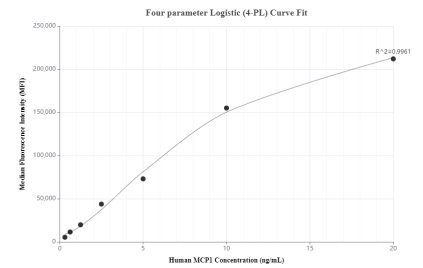
Human peripheral blood mononuclear cells (1×10^6 cells/mL) were cultured in RPMI-1640 supplemented with 10% fetal bovine serum, 100 U/mL penicillin, and 100 μ g/mL streptomycin sulfate. The cells were unstimulated or stimulated with 10 μ g/mL PHA. Aliquots of the cell culture supernates were removed on days 3 and 5 and assayed for levels of human MCP-1.



Serum of sixteen individual healthy human donors was measured. The human MCP-1 concentration of detected samples was determined to be 595.9 pg/mL with a range of 193.4 - 1,105.3 pg/mL



Cytometric bead array standard curve of MP00938-1, MCP-1 Recombinant Matched Antibody Pair, PBS Only. Capture antibody: 80847-4-PBS. Detection antibody: 80847-7-PBS. Standard: Eg31375. Range: 0.313-20 ng/mL



Cytometric bead array standard curve of MP00938-2, MCP-1 Recombinant Matched Antibody Pair, PBS Only. Capture antibody: 80847-5-PBS. Detection antibody: 80847-7-PBS. Standard: Eg31375. Range: 0.313-20 ng/mL