

For Research Use Only

# MCP-1/CCL2 Recombinant antibody, PBS Only (Capture)

Catalog Number: 80847-4-PBS



## Basic Information

<b>Catalog Number:</b> 80847-4-PBS	<b>GenBank Accession Number:</b> BC009716	<b>Purification Method:</b> Protein A purification
<b>Size:</b> 100ug , Concentration: 1 mg/ml by Nanodrop;	<b>GeneID (NCBI):</b> 6347	<b>CloneNo.:</b> 241165B11
<b>Source:</b> Rabbit	<b>UNIPROT ID:</b> P13500	
<b>Isotype:</b> IgG	<b>Full Name:</b> chemokine (C-C motif) ligand 2	
	<b>Calculated MW:</b> 99 aa, 11 kDa	

## Applications

**Tested Applications:**  
Cytometric bead array, Sandwich ELISA, Indirect ELISA,  
Sample test

**Species Specificity:**  
human

## Product Information

80847-4-PBS targets MCP-1/CCL2 as part of a matched antibody pair:

MP00938-1: 80847-4-PBS capture and 80847-7-PBS detection (validated in Cytometric bead array, Sandwich ELISA)

Unconjugated rabbit recombinant monoclonal antibody in PBS only (BSA and azide free) storage buffer at a concentration of 1 mg/mL, ready for conjugation. Created using Proteintech's proprietary in-house recombinant technology. Recombinant production enables unrivalled batch-to-batch consistency, easy scale-up, and future security of supply.

This conjugation ready format makes antibodies ideal for use in many applications including: ELISAs, multiplex assays requiring matched pairs, mass cytometry, and multiplex imaging applications. Antibody use should be optimized by the end user for each application and assay.

## Storage

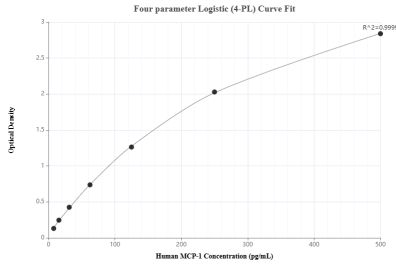
**Storage:**  
Store at -80°C.

**Storage Buffer:**  
PBS Only

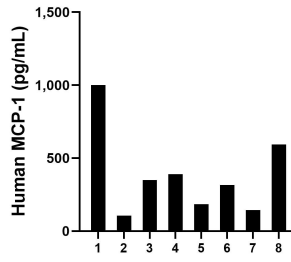
For technical support and original validation data for this product please contact:  
T: 1 (888) 4PTGLAB (1-888-478-4522) (toll free in USA), or 1(312) 455-8498 (outside USA) E: proteintech@ptglab.com W: ptglab.com

This product is exclusively available under Proteintech Group brand and is not available to purchase from any other manufacturer.

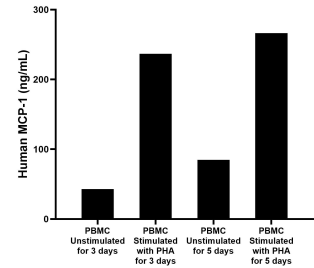
## Selected Validation Data



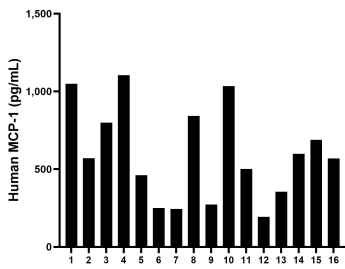
Sandwich ELISA standard curve of MP00938-1, Human MCP-1 Recombinant Matched Antibody Pair - PBS only. 80847-4-PBS was coated to a plate as the capture antibody and incubated with serial dilutions of standard Eg31375. 80847-7-PBS was HRP conjugated as the detection antibody. Range: 7.8-500 pg/mL



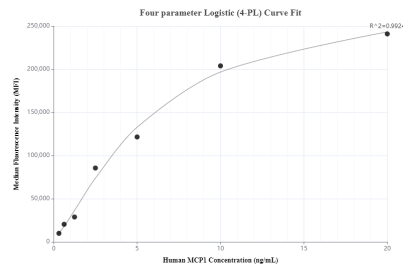
Urine of eight individual healthy human donors was measured. The human MCP-1 concentration of detected samples was determined to be 385.1 pg/mL with a range of 106.1 - 999.8 pg/mL



Human peripheral blood mononuclear cells ( $1 \times 10^6$  cells/mL) were cultured in RPMI-1640 supplemented with 10% fetal bovine serum, 100 U/mL penicillin, and 100  $\mu$ g/mL streptomycin sulfate. The cells were unstimulated or stimulated with 10  $\mu$ g/mL PHA. Aliquots of the cell culture supernates were removed on days 3 and 5 and assayed for levels of human MCP-1.



Serum of sixteen individual healthy human donors was measured. The human MCP-1 concentration of detected samples was determined to be 595.9 pg/mL with a range of 193.4 - 1,105.3 pg/mL



Cytometric bead array standard curve of MP00938-1, MCP-1 Recombinant Matched Antibody Pair, PBS Only. Capture antibody: 80847-4-PBS. Detection antibody: 80847-7-PBS. Standard: Eg31375. Range: 0.313-20 ng/mL