

For Research Use Only

ALDOA Recombinant antibody, PBS Only



Catalog Number: 80837-1-PBS

Basic Information

Catalog Number: 80837-1-PBS	GenBank Accession Number: BC016800	Purification Method: Protein A purification
Size: 100ug , Concentration: 1mg/ml by Nanodrop;	GeneID (NCBI): 226	CloneNo.: 2F4
Source: Rabbit	UNIPROT ID: P04075	
Isotype: IgG	Full Name: aldolase A, fructose-bisphosphate	
Immunogen Catalog Number: AG1726	Calculated MW: 39 kDa	
	Observed MW: 35-40 kDa	

Applications

Tested Applications:
WB, IF/ICC, Indirect ELISA

Species Specificity:
Human, Mouse, Pig, rat

Background Information

ALDOA (Fructose-bisphosphate aldolase A) is also named as lung cancer antigen NY-LU-1, muscle-type aldolase, ALDA and belongs to the class I fructose-bisphosphate aldolase family. The ALDOA gene encodes a homotetrameric protein (PMID:14615364). It is found in skeletal muscle and red blood cells, and functions in glycolysis, promoting the reversible cleavage of FBP to triose phosphate, G-3-P and DHAP. ALDOA is upregulated in various cancers, including human lung squamous and renal cell carcinomas (PMID:19937139).

Storage

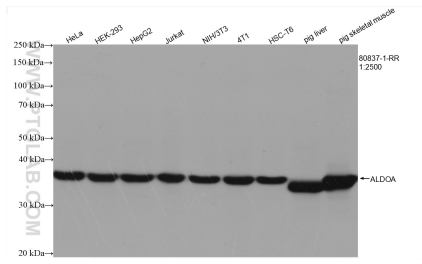
Storage:
Store at -80°C.

Storage Buffer:
PBS Only

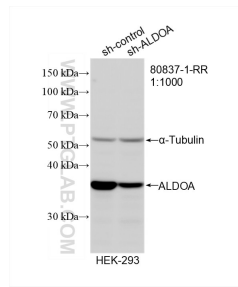
For technical support and original validation data for this product please contact:
T: 1 (888) 4PTGLAB (1-888-478-4522) (toll free in USA), or 1(312) 455-8498 (outside USA) E: proteintech@ptglab.com
W: ptglab.com

This product is exclusively available under Proteintech Group brand and is not available to purchase from any other manufacturer.

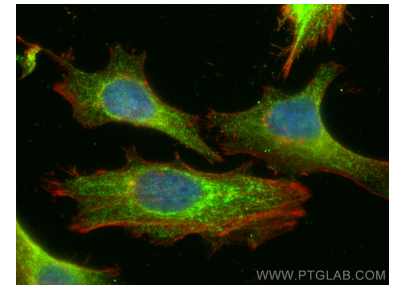
Selected Validation Data



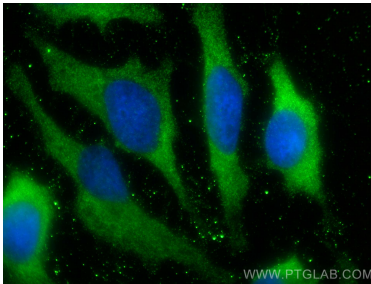
Various lysates were subjected to SDS PAGE followed by western blot with 80837-1-RR (ALDOA antibody) at dilution of 1:2500 incubated at room temperature for 1.5 hours. This data was developed using the same antibody clone with 80837-1-PBS in a different storage buffer formulation.



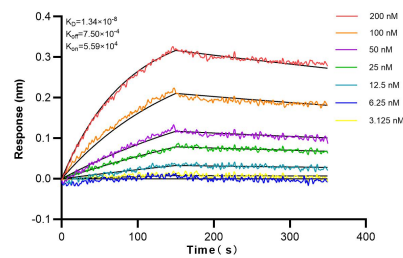
WB result of ALDOA antibody (80837-1-RR; 1:1000; incubated at room temperature for 1.5 hours) with sh-Control and sh-ALDOA transfected HEK-293 cells. This data was developed using the same antibody clone with 80837-1-PBS in a different storage buffer formulation.



Immunofluorescent analysis of (4% PFA) fixed HeLa cells using ALDOA antibody (80837-1-RR, Clone: 2F4) at dilution of 1:200 and CoraLite®488-Conjugated AffiniPure Goat Anti-Rabbit IgG(H+L), CL594-phalloidin (red). This data was developed using the same antibody clone with 80837-1-PBS in a different storage buffer formulation.



Immunofluorescent analysis of (-20°C Methanol) fixed HeLa cells using ALDOA antibody (80837-1-RR, Clone: 2F4) at dilution of 1:200 and CoraLite®488-Conjugated AffiniPure Goat Anti-Rabbit IgG(H+L). This data was developed using the same antibody clone with 80837-1-PBS in a different storage buffer formulation.



Biolayer interferometry (BLI) kinetic assays of 80837-1-RR against Human ALDOA were performed. The affinity constant is 1.34 nM.