

For Research Use Only

Beta Tubulin Recombinant antibody, PBS Only



Catalog Number:80713-1-PBS

Basic Information

Catalog Number: 80713-1-PBS	GenBank Accession Number: BC000748	Purification Method: Protein A purification
Size: 100ug , Concentration: 1 mg/ml by Nanodrop;	GeneID (NCBI): 10381	CloneNo.: 2013
Source: Rabbit	UNIPROT ID: Q13509	
Isotype: IgG	Full Name: tubulin, beta 3	
Immunogen Catalog Number: AG0117	Calculated MW: 450 aa, 50 kDa	
	Observed MW: 50-55 kDa	

Applications

Tested Applications:
WB, IP, IF, FC, Indirect ELISA

Species Specificity:
Human, mouse, rat, zebrafish

Storage

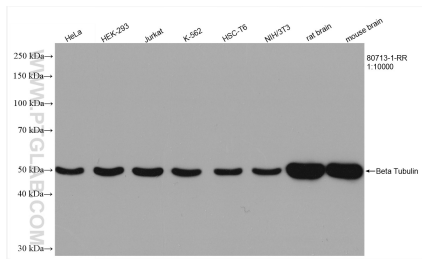
Storage:
Store at -80°C.

Storage Buffer:
PBS Only

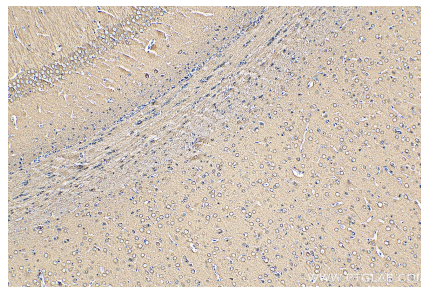
For technical support and original validation data for this product please contact:
T: 1 (888) 4PTGLAB (1-888-478-4522) (toll free in USA), or 1(312) 455-8498 (outside USA) E: proteintech@ptglab.com
W: ptglab.com

This product is exclusively available under Proteintech Group brand and is not available to purchase from any other manufacturer.

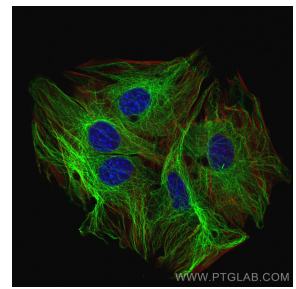
Selected Validation Data



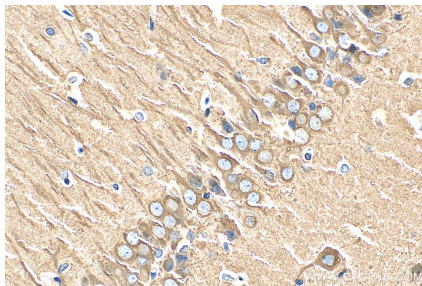
Various lysates were subjected to SDS PAGE followed by western blot with 80713-1-RR (Beta Tubulin antibody) at dilution of 1:10000 incubated at room temperature for 1.5 hours. This data was developed using the same antibody clone with 80713-1-PBS in a different storage buffer formulation.



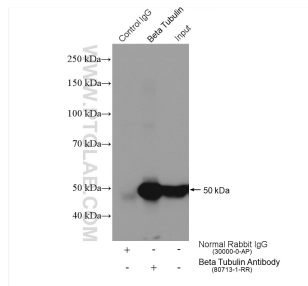
Immunohistochemical analysis of paraffin-embedded rat brain tissue slide using 80713-1-RR (Beta Tubulin antibody) at dilution of 1:1000 (under 10x lens). Heat mediated antigen retrieval with Tris-EDTA buffer (pH 9.0). This data was developed using the same antibody clone with 80713-1-PBS in a different storage buffer formulation.



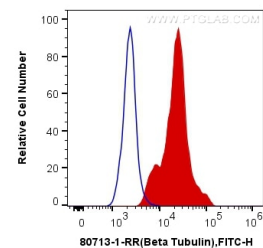
Immunofluorescent analysis of (4% PFA) fixed C2C12 cells using Beta Tubulin antibody (80713-1-RR, Clone: 2013) at dilution of 1:500 and CoraLite@488-Conjugated AffiniPure Goat Anti-Rabbit IgG(H+L), CL594-Phalloidin (red). This data was developed using the same antibody clone with 80713-1-PBS in a different storage buffer formulation.



Immunohistochemical analysis of paraffin-embedded rat brain tissue slide using 80713-1-RR (Beta Tubulin antibody) at dilution of 1:1000 (under 40x lens). Heat mediated antigen retrieval with Tris-EDTA buffer (pH 9.0). This data was developed using the same antibody clone with 80713-1-PBS in a different storage buffer formulation.



IP result of anti-Beta Tubulin (IP:80713-1-RR, 4ug; Detection:66240-1-Ig 1:10000) with HEK-293 cells lysate 1360 ug. This data was developed using the same antibody clone with 80713-1-PBS in a different storage buffer formulation.



1×10^6 HEK-293 cells were intracellularly stained with 0.2 ug Anti-Human Beta Tubulin (80713-1-RR, Clone:2013) and CoraLite@488-Conjugated AffiniPure Goat Anti-Rabbit IgG(H+L) at dilution 1:1000 (red), or 0.2 ug Control Antibody. Cells were fixed with 4% PFA and permeabilized with Flow Cytometry Perm Buffer (PF00011-C). This data was developed using the same antibody clone with 80713-1-PBS in a different storage buffer formulation.