

For Research Use Only

Phospho-c-SRC (Tyr530) Recombinant antibody

Catalog Number:80706-2-RR



Basic Information

Catalog Number:

80706-2-RR

Size:

100ul

Source:

Rabbit

Isotype:

IgG

GenBank Accession Number:

BC011566

GeneID (NCBI):

6714

ENSEMBL Gene ID:

ENSG00000197122

UNIPROT ID:

P12931

Full Name:

v-src sarcoma (Schmidt-Ruppin A-2)
viral oncogene homolog (avian)

Calculated MW:

60 kDa

Observed MW:

60 kDa

Purification Method:

Protein A purification

CloneNo.:

241477A4

Recommended Dilutions:

WB 1:5000-1:50000

Applications

Tested Applications:

WB, ELISA

Species Specificity:

human

Positive Controls:

WB : LPS treated THP-1 cells,

Background Information

c-Src is a 60 kDa protein encoded by the Src gene belonging to a family of non-RTK known as SFK. As a typical protein, the polypeptide sequence of c-Src comprises an N-terminal head and a C-terminal tail but has four Src homology (SH) domains numbered 1, 2, 3, and 4. The C-terminal tail consists of a carboxy group that is short and connected to the SH1 domain. Additionally, the C-terminal domain serves as an anchor for a phosphotyrosine moiety, specifically Tyr530 in human Src (or Tyr527 in chicken). (PMID: 38201459)

Storage

Storage:

Store at -20°C. Stable for one year after shipment.

Storage Buffer:

PBS with 0.02% sodium azide and 50% glycerol pH 7.3.

Aliquoting is unnecessary for -20°C storage

*** 20ul sizes contain 0.1% BSA

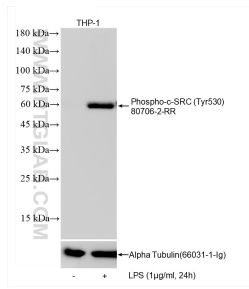
For technical support and original validation data for this product please contact:

T: 1 (888) 4PTGLAB (1-888-478-4522) (toll free in USA), or 1(312) 455-8498 (outside USA)

E: proteintech@ptglab.com
W: ptglab.com

This product is exclusively available under Proteintech Group brand and is not available to purchase from any other manufacturer.

Selected Validation Data



Non-treated and LPS treated THP-1 cells were subjected to SDS PAGE followed by western blot with 80706-2-RR (c-SRC antibody) at dilution of 1:10000 incubated at room temperature for 1.5 hours. The membrane was stripped and re-blotted with Alpha Tubulin (66031-1-Ig) antibody as a loading control.