

For Research Use Only

# Phospho-c-SRC (Tyr530) Recombinant antibody, PBS Only

Catalog Number: 80706-2-PBS



## Basic Information

<b>Catalog Number:</b> 80706-2-PBS	<b>GenBank Accession Number:</b> BC011566	<b>Purification Method:</b> Protein A purification
<b>Size:</b> 100ug, Concentration: 1 mg/ml by Nanodrop;	<b>GeneID (NCBI):</b> 6714	<b>CloneNo.:</b> 241477A4
<b>Source:</b> Rabbit	<b>ENSEMBL Gene ID:</b> ENSG00000197122	
<b>Isotype:</b> IgG	<b>UNIPROT ID:</b> P12931	
	<b>Full Name:</b> v-src sarcoma (Schmidt-Ruppin A-2) viral oncogene homolog (avian)	
	<b>Calculated MW:</b> 60 kDa	
	<b>Observed MW:</b> 60 kDa	

## Applications

**Tested Applications:**  
WB, Indirect ELISA

**Species Specificity:**  
human

## Background Information

c-Src is a 60 kDa protein encoded by the Src gene belonging to a family of non-RTK known as SFK. As a typical protein, the polypeptide sequence of c-Src comprises an N-terminal head and a C-terminal tail but has four Src homology (SH) domains numbered 1, 2, 3, and 4. The C-terminal tail consists of a carboxy group that is short and connected to the SH1 domain. Additionally, the C-terminal domain serves as an anchor for a phosphotyrosine moiety, specifically Tyr530 in human Src (or Tyr527 in chicken). (PMID: 38201459)

## Storage

**Storage:**  
Store at -80°C.

**Storage Buffer:**  
PBS Only

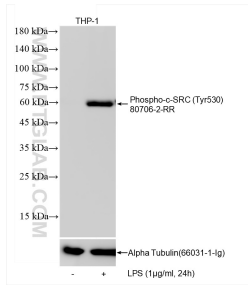
For technical support and original validation data for this product please contact:

T: 1 (888) 4PTGLAB (1-888-478-4522) (toll free in USA), or 1(312) 455-8498 (outside USA)

E: [proteintech@ptglab.com](mailto:proteintech@ptglab.com)  
W: [ptglab.com](http://ptglab.com)

This product is exclusively available under Proteintech Group brand and is not available to purchase from any other manufacturer.

## Selected Validation Data



Non-treated and LPS treated THP-1 cells were subjected to SDS PAGE followed by western blot with 80706-2-RR (c-SRC antibody) at dilution of 1:10000 incubated at room temperature for 1.5 hours. The membrane was stripped and re-blotted with Alpha Tubulin (66031-1-1g) antibody as a loading control. This data was developed using the same antibody clone with 80706-2-PBS in a different storage buffer formulation.