

For Research Use Only

XRCC5 Recombinant antibody, PBS Only (Capture)

Catalog Number: 80325-3-PBS



Basic Information

Catalog Number: 80325-3-PBS	GenBank Accession Number: BC019027	Purification Method: Protein A purification
Size: 100ug, Concentration: 1 mg/ml by Nanodrop;	GeneID (NCBI): 7520	CloneNo.: 240301E10
Source: Rabbit	UNIPROT ID: P13010	
Isotype: IgG	Full Name: X-ray repair complementing defective repair in Chinese hamster cells 5 (double-strand-break rejoining)	
Immunogen Catalog Number: AG9454	Calculated MW: 732 aa, 83 kDa	

Applications

Tested Applications:
Cytometric bead array, Sandwich ELISA, Indirect ELISA,
Sample test

Species Specificity:
human

Product Information

80325-3-PBS targets XRCC5 as part of a matched antibody pair:

MP00384-2: 80325-3-PBS capture and 80325-2-PBS detection (validated in Cytometric bead array, Sandwich ELISA)

MP00384-3: 80325-3-PBS capture and 80325-4-PBS detection (validated in Cytometric bead array)

Unconjugated rabbit recombinant monoclonal antibody in PBS only (BSA and azide free) storage buffer at a concentration of 1 mg/mL, ready for conjugation. Created using Proteintech's proprietary in-house recombinant technology. Recombinant production enables unrivalled batch-to-batch consistency, easy scale-up, and future security of supply.

This conjugation ready format makes antibodies ideal for use in many applications including: ELISAs, multiplex assays requiring matched pairs, mass cytometry, and multiplex imaging applications. Antibody use should be optimized by the end user for each application and assay.

Storage

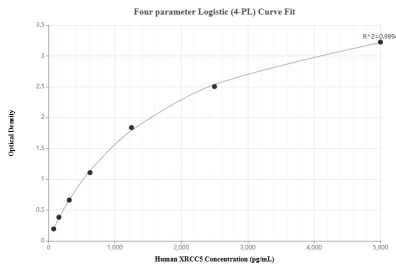
Storage:
Store at -80°C.

Storage Buffer:
PBS Only

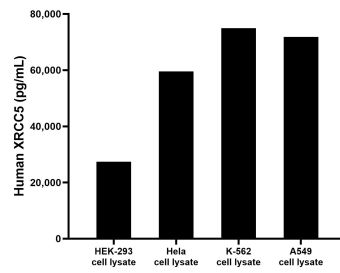
For technical support and original validation data for this product please contact:
T: 1 (888) 4PTGLAB (1-888-478-4522) (toll free in USA), or 1(312) 455-8498 (outside USA)
E: proteintech@ptglab.com
W: ptglab.com

This product is exclusively available under Proteintech Group brand and is not available to purchase from any other manufacturer.

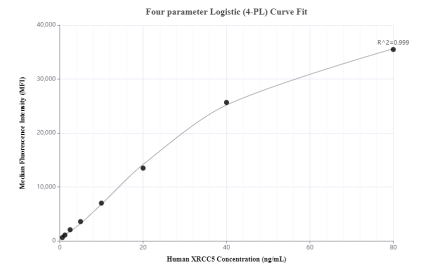
Selected Validation Data



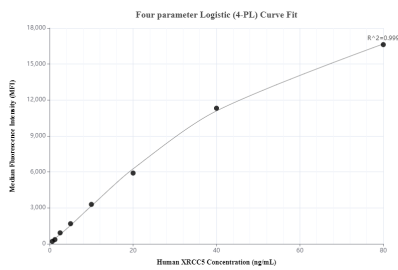
Sandwich ELISA standard curve of MP00384-2, Human XRCC5 Recombinant Matched Antibody Pair - PBS only. 80325-3-PBS was coated to a plate as the capture antibody and incubated with serial dilutions of standard Ag9454. 80325-2-PBS was HRP conjugated as the detection antibody. Range: 78.1-5000 pg/mL



HEK-293, HeLa, K-562 and A549 cell lysates were measured. The human XRCC5 concentration of detected samples was determined to be 27,396.5 pg/mL (based on a 1.20 mg/mL extract load) in HEK-293 cell lysate, 59,588.9 pg/mL (based on a 1.50 mg/mL extract load) in HeLa cell lysate, 74,969.1 pg/mL (based on a 2.10 mg/mL extract load) in K-562 cell lysate and 71,822.7 pg/mL (based on a 1.00 mg/mL extract load) in A549 cell lysate.



Cytometric bead array standard curve of MP00384-2, XRCC5 Recombinant Matched Antibody Pair, PBS Only. Capture antibody: 80325-3-PBS. Detection antibody: 80325-2-PBS. Standard: Ag9454. Range: 0.625-80 ng/mL



Cytometric bead array standard curve of MP00384-3, XRCC5 Recombinant Matched Antibody Pair, PBS Only. Capture antibody: 80325-3-PBS. Detection antibody: 80325-4-PBS. Standard: Ag9454. Range: 0.625-80 ng/mL