

METTL3 Recombinant antibody

Catalog Number: 80323-1-RR

Featured Product

Basic Information

| | | |
|--|---|---|
| Catalog Number: 80323-1-RR | GenBank Accession Number: BC001650 | Purification Method: Protein A purification |
| Size: 100ul , Concentration: 1000 µg/ml by Nanodrop; | GeneID (NCBI): 56339 | CloneNo.: 219 |
| Source: Rabbit | Full Name: methyltransferase like 3 | Recommended Dilutions: WB 1:5000-1:50000 IHC 1:200-1:1000 IF 1:50-1:500 |
| Isotype: IgG | Calculated MW: 64 kDa | |
| Immunogen Catalog Number: AG7110 | Observed MW: 65-70 kDa | |

Applications

Tested Applications:

IF, IHC, WB, ELISA

Species Specificity:

Human, mouse, rat

Note-IHC: suggested antigen retrieval with TE buffer pH 9.0; (*) Alternatively, antigen retrieval may be performed with citrate buffer pH 6.0

Positive Controls:

WB : LNCaP cells, HeLa cells, HepG2 cells, HEK-293 cells, Jurkat cells, K-562 cells, Neuro-2a cells, NIH/3T3 cells, HSC-T6 cells

IHC : mouse testis tissue, human colon cancer tissue, human oesophagus cancer tissue, human lung cancer tissue, rat testis tissue

IF : Jurkat cells,

Background Information

METTL3 is a key S-adenosyl-L-methionine-binding subunit, which is component of a complex multicomponent enzyme that catalyzes the methylation of internal adenosine residues in eukaryotic mRNA, forming N6-methyladenosine. It contains 2 putative nuclear localization signals and 2 consensus methylation motifs. The calculated molecular weight of METTL3 is 64 kDa, but modified METTL3 is about 65-70 kDa.

Storage

Storage:

Store at -20°C. Stable for one year after shipment.

Storage Buffer:

PBS with 0.02% sodium azide and 50% glycerol pH 7.3.

Aliquoting is unnecessary for -20°C storage

*** 20ul sizes contain 0.1% BSA

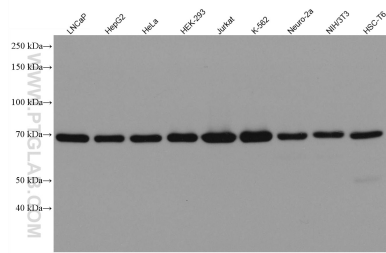
For technical support and original validation data for this product please contact:

T: 1 (888) 4PTGLAB (1-888-478-4522) (toll free in USA), or 1(312) 455-8498 (outside USA)

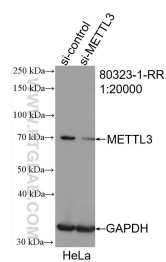
E: proteintech@ptglab.com
W: ptglab.com

This product is exclusively available under Proteintech Group brand and is not available to purchase from any other manufacturer.

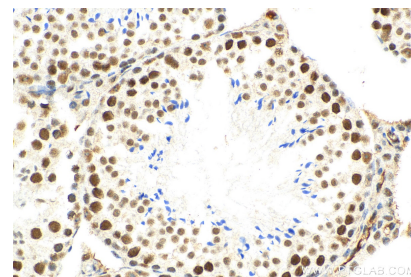
Selected Validation Data



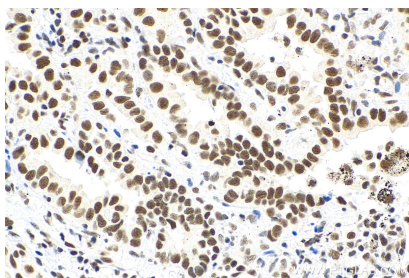
Various lysates were subjected to SDS PAGE followed by western blot with 80323-1-RR (METTL3 antibody) at dilution of 1:10000 incubated at room temperature for 1.5 hours.



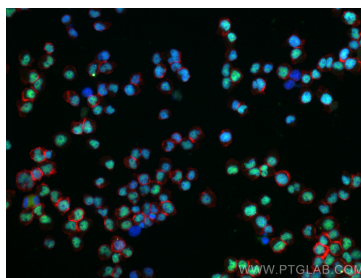
WB result of METTL3 antibody (80323-1-RR; 1:20000; incubated at room temperature for 1.5 hours) with sh-Control and sh-METTL3 transfected HeLa cells.



Immunohistochemical analysis of paraffin-embedded mouse testis tissue slide using 80323-1-RR (METTL3 antibody) at dilution of 1:200 (under 40x lens). Heat mediated antigen retrieval with Tris-EDTA buffer (pH 9.0).



Immunohistochemical analysis of paraffin-embedded human lung cancer tissue slide using 80323-1-RR (METTL3 antibody) at dilution of 1:200 (under 40x lens). Heat mediated antigen retrieval with Tris-EDTA buffer (pH 9.0).



Immunofluorescent analysis of (4% PFA) fixed Jurkat cells using METTL3 antibody (80323-1-RR, Clone: 2I9) at dilution of 1:200 and CoraLite®488-Conjugated AffiniPure Goat Anti-Rabbit IgG(H+L), CL594-Phalloidin (red).