

For Research Use Only

# RPS6 Recombinant antibody

Catalog Number: 80208-1-RR



## Basic Information

<b>Catalog Number:</b> 80208-1-RR	<b>GenBank Accession Number:</b> BC000524	<b>Purification Method:</b> Protein A purification
<b>Size:</b> 100ul , Concentration: 300 µg/ml by Nanodrop;	<b>GeneID (NCBI):</b> 6194	<b>CloneNo.:</b> 6L9
<b>Source:</b> Rabbit	<b>Full Name:</b> ribosomal protein S6	<b>Recommended Dilutions:</b> WB 1:5000-1:50000 IF 1:50-1:500
<b>Isotype:</b> IgG	<b>Calculated MW:</b> 29 kDa	
	<b>Observed MW:</b> 32 kDa	

## Applications

<b>Tested Applications:</b> IF, WB, ELISA	<b>Positive Controls:</b>
<b>Species Specificity:</b> Human, rat, mouse, zebrafish	<b>WB :</b> LNCaP cells, RAW 264.7 cells, zebrafish tissue, HeLa cells, HEK-293 cells, HepG2 cells, Jurkat cells, HSC-T6 cells, 4T1 cells
	<b>IF :</b> HepG2 cells,

## Background Information

Ribosomal protein S6 (RPS6), Phosphoprotein NP33. It may play an important role in controlling cell growth and proliferation through the selective translation of particular classes of mRNA. Ribosomal protein S6 is the major substrate of protein kinases in eukaryote ribosomes. The phosphorylation is stimulated by growth factors, tumor promoting agents, and mitogens. It is dephosphorylated at growth arrest. Phosphorylated at Ser-235 and Ser-236 by RPS6KA1 and RPS6KA3; phosphorylation at these sites facilitates the assembly of the preinitiation complex.

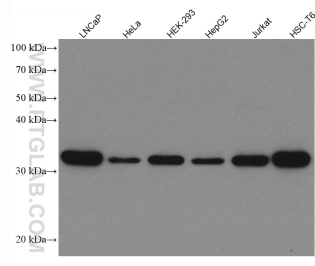
## Storage

**Storage:**  
Store at -20°C.  
**Storage Buffer:**  
PBS with 0.02% sodium azide and 50% glycerol pH 7.3.  
Aliquoting is unnecessary for -20°C storage

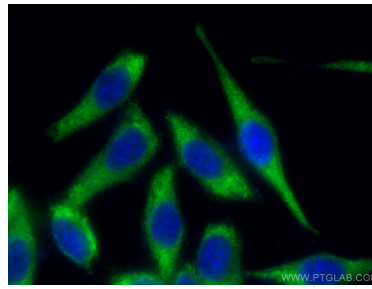
For technical support and original validation data for this product please contact:  
T: 1 (888) 4PTGLAB (1-888-478-4522) (toll free in USA), or 1(312) 455-8498 (outside USA) E: proteintech@ptglab.com W: ptglab.com

This product is exclusively available under Proteintech Group brand and is not available to purchase from any other manufacturer.

## Selected Validation Data



Various lysates were subjected to SDS PAGE followed by western blot with 80208-1-RR (RPS6 antibody) at dilution of 1:15000 incubated at room temperature for 1.5 hours.



Immunofluorescent analysis of (-20°C Methanol) fixed HepG2 cells using RPS6 antibody (80208-1-RR, Clone: 6L9) at dilution of 1:200 and CoraLite®488-Conjugated AffiniPure Goat Anti-Rabbit IgG(H+L).