

For Research Use Only

# Phospho-S6 Ribosomal protein (Ser236) Recombinant antibody, PBS Only



Catalog Number: **80206-1-PBS**

## Basic Information

<b>Catalog Number:</b> 80206-1-PBS	<b>GenBank Accession Number:</b> BC000524	<b>Purification Method:</b> Protein A purification
<b>Size:</b> 100ug , Concentration: 1 mg/ml by Nanodrop;	<b>GeneID (NCBI):</b> 6194	<b>CloneNo.:</b> 7K17
<b>Source:</b> Rabbit	<b>UNIPROT ID:</b> P62753	
<b>Isotype:</b> IgG	<b>Full Name:</b> ribosomal protein S6	
	<b>Calculated MW:</b> 29 kDa	
	<b>Observed MW:</b> 32 kDa	

## Applications

**Tested Applications:**  
WB, FC, Indirect ELISA

**Species Specificity:**  
Human, mouse

## Background Information

Ribosomal protein S6 (RPS6) is one of the components of the 40S ribosomal subunit. RPS6 has been functionally regarded as the stimulator and/or inhibitor of certain types of mRNA translation, as well as the regulator of cellular metabolisms, cells size, survival and proliferation. RPS6 is phosphorylated at multiple sites, comprised between Ser235 and Ser247, by the p70 rpS6 kinase (S6K) 1, which is a major downstream effector of the mammalian target of rapamycin complex 1 (mTORC1). Phosphorylation of RPS6 at the dual site Ser235/236 occurs also independently of mTORC1, via the p90 ribosomal S6 kinases (RSK), which are activated by the extracellular signal-regulated kinases (ERK). Recent studies performed in pancreatic  $\beta$ -cells identified PKA as an additional RPS6 kinase, specifically involved in the phosphorylation of Ser235/236. (PMID: 26490682, PMID: 21814187, PMID: 31112404). 80206-1-RR specifically recognizes the phosphorylation site of Ser236 or dual site Ser235/236.

## Storage

**Storage:**  
Store at -80°C.

**Storage Buffer:**  
PBS Only

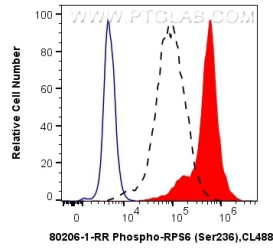
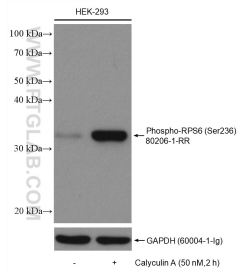
For technical support and original validation data for this product please contact:

T: 1 (888) 4PTGLAB (1-888-478-4522) (toll free  
in USA), or 1(312) 455-8498 (outside USA)

E: [proteintech@ptglab.com](mailto:proteintech@ptglab.com)  
W: [ptglab.com](http://ptglab.com)

**This product is exclusively available under Proteintech Group brand and is not available to purchase from any other manufacturer.**

## Selected Validation Data



Non-treated and Calyculin A treated HEK-293 cells were subjected to SDS PAGE followed by western blot with 80206-1-RR (Phospho-S6 Ribosomal protein (Ser236) antibody) at dilution of 1:5000 incubated at room temperature for 1.5 hours. The membrane was stripped and re-blotted with GAPDH antibody as loading control. This data was developed using the same antibody clone with 80206-1-PBS in a different storage buffer formulation.

1X10<sup>6</sup> HEK-293 cells untreated (dashed lines) or treated with Calyculin A (red) were intracellularly stained with 0.5 ug Anti-Human Phospho-S6 Ribosomal protein (Ser236) (80206-1-RR, Clone:7K17) and CoraLite® 488-Conjugated AffiniPure Goat Anti-Rabbit IgG(H+L) at dilution 1:1000, or 0.5 ug Control Antibody (blue). Cells were fixed with 4% PFA and permeabilized with 90% MeOH. This data was developed using the same antibody clone with 80206-1-PBS in a

