

For Research Use Only

Phospho-S6 Ribosomal protein (Ser235/236) Recombinant antibody, PBS Only

Catalog Number: 80130-2-PBS



Basic Information

Catalog Number: 80130-2-PBS	GenBank Accession Number: NM_001010	Purification Method: Protein A purification
Size: 100ug, Concentration: 1 mg/ml by Nanodrop;	GeneID (NCBI): 6194	CloneNo.: 241018D12
Source: Rabbit	UNIPROT ID: P62753	
Isotype: IgG	Full Name: ribosomal protein S6	
	Observed MW: 35 kDa	

Applications

Tested Applications:
WB, IF/ICC, FC (Intra), ELISA

Species Specificity:
human, mouse, rat

Background Information

The ribosomal protein S6 (rpS6) is a component of the small 40S ribosomal subunit implicated in mRNA decoding. rpS6 is phosphorylated at multiple sites, comprised between Ser235 and Ser247, by the p70 rpS6 kinase (S6K) 1, which is a major downstream effector of the mammalian target of rapamycin complex 1 (mTORC1). Phosphorylation of rpS6 at the dual site Ser235/236 occurs also independently of mTORC1, via the p90 ribosomal S6 kinases (RSK), which are activated by the extracellular signal-regulated kinases (ERK). (PMID: 21814187)

Storage

Storage:
Store at -80°C.
Storage Buffer:
PBS Only

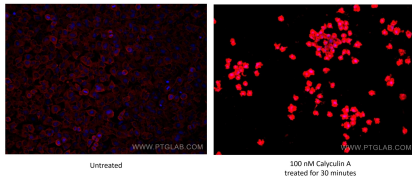
For technical support and original validation data for this product please contact:

T: 1 (888) 4PTGLAB (1-888-478-4522) (toll free
in USA), or 1(312) 455-8498 (outside USA)

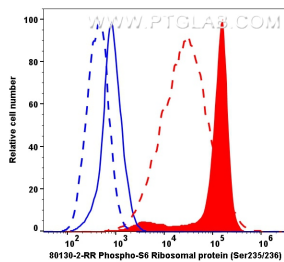
E: proteintech@ptglab.com
W: ptglab.com

This product is exclusively available under Proteintech Group brand and is not available to purchase from any other manufacturer.

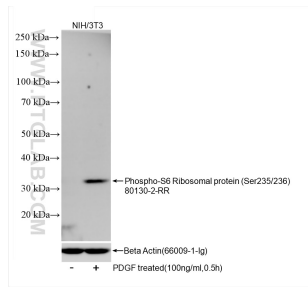
Selected Validation Data



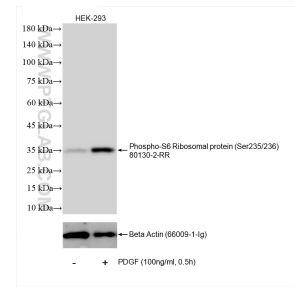
Immunofluorescent analysis of (4% PFA) fixed untreated and 100 nM Calyculin A (30 minutes) treated HeLa cells using Phospho-S6 Ribosomal protein (Ser235/236) antibody (80130-2-RR, Clone: 241018D12) at dilution of 1:500 and Multi-rAb CoraLite® Plus 594-Goat Anti-Rabbit Recombinant Secondary Antibody (H+L) (Cat.NO. RGAR004). This data was developed using the same antibody clone with 80130-2-PBS in a different storage buffer formulation.



1x10⁶ untreated HeLa cells (dash lines) and 100 nM Calyculin A (30 minutes) treated HeLa cells (full lines) were intracellularly stained with 0.4 µg Phospho-S6 Ribosomal protein (Ser235/236) Recombinant antibody (80130-2-RR, Clone: 241018D12, red) and Multi-rAb CoraLite® Plus 647-Goat Anti-Rabbit Recombinant Secondary Antibody (H+L) (Cat.NO. RGAR005). Rabbit IgG Isotype Control Recombinant Antibody (98136-1-RR, Clone: 240953C9, blue) was parallel stained



Non-treated and PDGF (HZ-1215) treated NIH/3T3 cells were subjected to SDS PAGE followed by western blot with 80130-2-RR (Phospho-S6 Ribosomal protein (Ser235/236) antibody) at dilution of 1:5000 incubated at room temperature for 1.5 hours. The membrane was stripped and re-blotted with Beta Actin (66009-1-Ig) antibody as a loading control. This data was developed using the same antibody clone with 80130-2-PBS in a different storage buffer formulation.



Non-treated and PDGF (HZ-1215) treated HEK-293 cells were subjected to SDS PAGE followed by western blot with 80130-2-RR (Phospho-S6 Ribosomal protein (Ser235/236)) at dilution of 1:5000 incubated at room temperature for 1.5 hours. The membrane was stripped and re-blotted with Beta Actin (66009-1-Ig) antibody as a loading control. This data was developed using the same antibody clone with 80130-2-PBS in a different storage buffer formulation.