

For Research Use Only

Phospho-TAU (Thr231) Recombinant antibody

Catalog Number:80101-7-RR



Basic Information

Catalog Number: 80101-7-RR	GenBank Accession Number: BC000558	Purification Method: Protein A purification
Size: 100ul , Concentration: 1000 ug/ml by Nanodrop;	GeneID (NCBI): 4137	CloneNo.: 240632B1
Source: Rabbit	UNIPROT ID: P10636	Recommended Dilutions: WB 1:1000-1:4000
Isotype: IgG	Full Name: microtubule-associated protein tau	
	Calculated MW: 37-46, 79-81 kDa	
	Observed MW: 50-80 kDa	

Applications

Tested Applications: WB, FC (Intra), ELISA	Positive Controls: WB : SH-SY5Y cells, λ phosphatase treated SH-SY5Y cells
Species Specificity: human	

Background Information

Tau (tubulin-associated unit) is a microtubule-associated protein (also known as MAPT), expressed mainly in neurons of the central nervous system. Its primary function is to modulate microtubule dynamics for maintaining axonal cytoskeleton. The Tau protein has six isoforms produced from a single gene through alternative RNA splicing. Isoforms differ in number of inserts at the N-terminal half and the number of repeats at the C-terminal half (3 repeat-3R; 4 repeat-4R). Tau is hyperphosphorylated during aging and in age-related neurodegenerative diseases such as Alzheimer's disease (AD) and fronto-temporal dementia. Hyperphosphorylation of Tau leads to the formation of neurofibrillary tangles (NFT) in the neurons and glia cells, which is one of the hallmarks of AD.

Storage

Storage:
Store at -20°C. Stable for one year after shipment.
Storage Buffer:
PBS with 0.02% sodium azide and 50% glycerol pH 7.3.
Aliquoting is unnecessary for -20°C storage

*** 20ul sizes contain 0.1% BSA

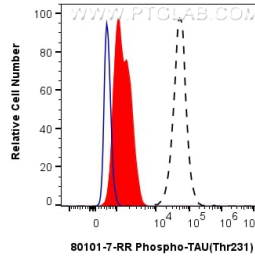
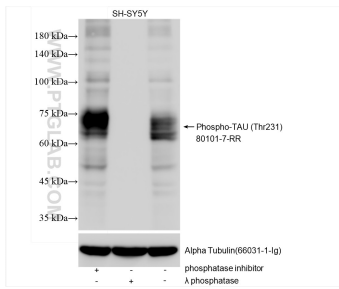
For technical support and original validation data for this product please contact:

T: 1 (888) 4PTGLAB (1-888-478-4522) (toll free in USA), or 1(312) 455-8498 (outside USA)

E: proteintech@ptglab.com
W: ptglab.com

This product is exclusively available under Proteintech Group brand and is not available to purchase from any other manufacturer.

Selected Validation Data



Non-treated SH-SY5Y cells, phosphatase inhibitor treated SH-SY5Y cells and λ phosphatase treated SH-SY5Y cells were subjected to SDS PAGE followed by western blot with 80101-7-RR (Phospho-TAU (Thr231) antibody) at dilution of 1:2000 incubated at room temperature for 1.5 hours. The membrane was stripped and re-blotted with Alpha Tubulin (66031-1-Ig) antibody as a loading control.

1×10^6 SH-SY5Y cells untreated (dashed lines) or treated with λ phosphatase which intracellularly stained with 0.06 ug Phospho-TAU (Thr231) Recombinant antibody (80101-7-RR, Clone:240632B1) and CoraLite®488-Conjugated Goat Anti-Rabbit IgG(H+L) (SA00013-2)(red), or 0.06 ug Rabbit IgG Isotype Control Recombinant Antibody (98136-1-RR, Clone: 240953C9) (blue). Cells were fixed with 4% PFA and permeabilized with 90% MeOH.