

For Research Use Only

Chk1 Recombinant antibody

Catalog Number: 80056-2-RR



Basic Information

Catalog Number: 80056-2-RR	GenBank Accession Number: BC004202	Purification Method: Protein A purification
Size: 100ul , Concentration: 1000 ug/ml by Nanodrop;	GeneID (NCBI): 1111	CloneNo.: 2G7
Source: Rabbit	UNIPROT ID: O14757	Recommended Dilutions: WB 1:5000-1:50000 IF/ICC 1:100-1:500
Isotype: IgG	Full Name: CHK1 checkpoint homolog (S. pombe)	
	Calculated MW: 54 kDa	
	Observed MW: 55 kDa	

Applications

Tested Applications: WB, IF/ICC, ELISA	Positive Controls:
Species Specificity: Human, mouse, rat	WB : HeLa cells, Jurkat cells, K-562 cells, MCF-7 cells, NIH/3T3 cells, HSC-T6 cells
	IF/ICC : HEK-293T cells,

Background Information

CHEK1(Checkpoint kinase-1) is also named as CHK1 and belongs to the protein kinase superfamily. It is implicated in a circuit in which it activates checkpoints, DNA repair and proliferating cell nuclear antigen and FANCD2 monoubiquitylation(PMID:21389083). CHEK1 protects vertebrate cells against spontaneous chromosome missegregation and is required to sustain anaphase delay when spindle function is disrupted by taxol(PMID:17276342). It has 3 isoforms produced by alternative splicing with the molecular mass of 54 kDa, 44 kDa and 50 kDa.

Storage

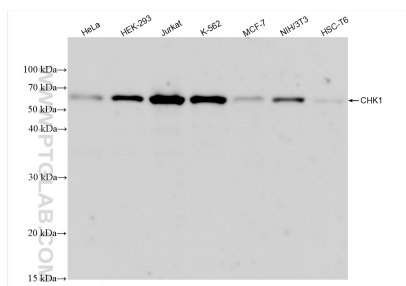
Storage:
Store at -20°C. Stable for one year after shipment.
Storage Buffer:
PBS with 0.02% sodium azide and 50% glycerol pH 7.3.
Aliquoting is unnecessary for -20°C storage

*** 20ul sizes contain 0.1% BSA

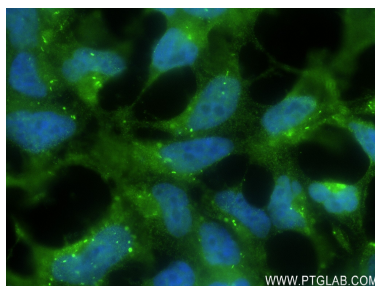
For technical support and original validation data for this product please contact:
T: 1 (888) 4PTGLAB (1-888-478-4522) (toll free in USA), or 1(312) 455-8498 (outside USA)
E: proteintech@ptglab.com
W: ptglab.com

This product is exclusively available under Proteintech Group brand and is not available to purchase from any other manufacturer.

Selected Validation Data



Various lysates were subjected to SDS PAGE followed by western blot with 80056-2-RR (Chk1 antibody) at dilution of 1:10000 incubated at room temperature for 1.5 hours.



Immunofluorescent analysis of (4% PFA) fixed HEK-293T cells using Chk1 antibody (80056-2-RR, Clone: 2G7) at dilution of 1:250 and CoraLite®488-Conjugated AffiniPure Goat Anti-Rabbit IgG(H+L) (SA00013-2).