

For Research Use Only

PPIF-Specific Monoclonal antibody, PBS Only (Capture/Detector)

Catalog Number: 68956-3-PBS



Basic Information

| | | |
|---|---|--|
| Catalog Number: 68956-3-PBS | GenBank Accession Number: BC005020 | Purification Method: Protein G Magarose purification |
| Size: 100ug , Concentration: 1 mg/ml by Nanodrop; | GeneID (NCBI): 10105 | CloneNo.: 3A12B5 |
| Source: Mouse | UNIPROT ID: P30405 | |
| Isotype: IgG1 | Full Name: peptidylprolyl isomerase F | |
| Immunogen Catalog Number: AG13151 | Calculated MW: 22 kDa | |

Applications

Tested Applications:
Cytometric bead array, Sandwich ELISA, Indirect ELISA, Sample test

Species Specificity:
human

Product Information

68956-3-PBS targets PPIF-Specific as part of a matched antibody pair:

MP50406-2: 68956-3-PBS capture and 68956-4-PBS detection (validated in Cytometric bead array, Sandwich ELISA)

MP50406-3: 68956-5-PBS capture and 68956-3-PBS detection (validated in Cytometric bead array)

Unconjugated mouse monoclonal antibody pair in PBS only (BSA and azide free) storage buffer at a concentration of 1 mg/mL, ready for conjugation.

This conjugation ready format makes antibodies ideal for use in many applications including: ELISAs, multiplex assays requiring matched pairs, mass cytometry, and multiplex imaging applications. Antibody use should be optimized by the end user for each application and assay.

Storage

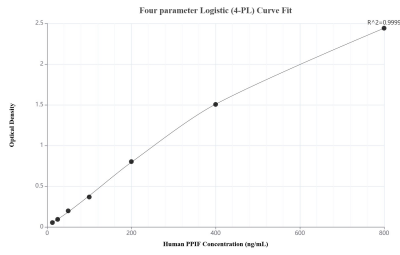
Storage:
Store at -80°C.

Storage Buffer:
PBS Only

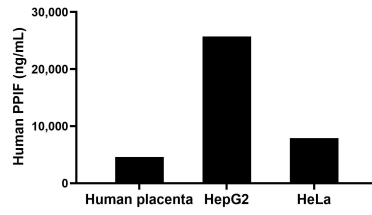
For technical support and original validation data for this product please contact:
T: 1 (888) 4PTGLAB (1-888-478-4522) (toll free in USA), or 1(312) 455-8498 (outside USA) E: proteintech@ptglab.com
W: ptglab.com

This product is exclusively available under Proteintech Group brand and is not available to purchase from any other manufacturer.

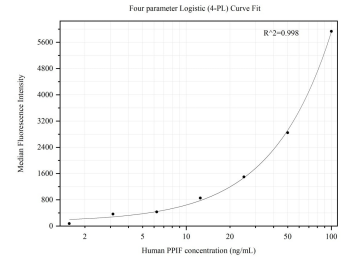
Selected Validation Data



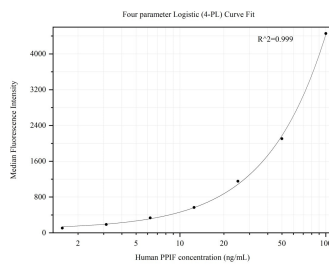
Sandwich ELISA standard curve of MP50406-2, Human PPIF Monoclonal Matched Antibody Pair - PBS only. 68956-3-PBS was coated to a plate as the capture antibody and incubated with serial dilutions of standard Ag13151. 68956-4-PBS was HRP conjugated as the detection antibody. Range: 12.5-800 ng/mL



The mean PPIF concentration was determined to be 4,606.00 ng/mL in human placenta cell extract based on a 1.30 mg/mL extract load, 25,711.00 ng/mL in HepG2 cell extract based on a 1.80 mg/mL extract load and 7,896.00 ng/mL in HeLa cell extract based on a 1.50 mg/mL extract load.



Cytometric bead array standard curve of MP50406-2, PPIF-Specific Monoclonal Matched Antibody Pair, PBS Only. Capture antibody: 68956-3-PBS. Detection antibody: 68956-4-PBS. Standard:Ag13151. Range: 1.563-100 ng/mL



Cytometric bead array standard curve of MP50406-3, PPIF-Specific Monoclonal Matched Antibody Pair, PBS Only. Capture antibody: 68956-5-PBS. Detection antibody: 68956-3-PBS. Standard:Ag13151. Range: 1.563-100 ng/mL