

For Research Use Only

SAT1 Monoclonal antibody, PBS Only

Catalog Number: 68928-1-PBS



Basic Information

Catalog Number:

68928-1-PBS

Size:

100ug, Concentration: 1 mg/ml by Nanodrop;

Source:

Mouse

Isotype:

IgG2a

Immunogen Catalog Number:

AG33644

GenBank Accession Number:

BC008424

GeneID (NCBI):

6303

UNIPROT ID:

P21673

Full Name:

spermidine/spermine N1-acetyltransferase 1

Calculated MW:

20 kDa

Observed MW:

15-25 kDa

Purification Method:

Protein A purification

CloneNo.:

1F3E4

Applications

Tested Applications:

WB, ELISA

Species Specificity:

human

Storage

Storage:

Store at -80°C.

Storage Buffer:

PBS Only

For technical support and original validation data for this product please contact:

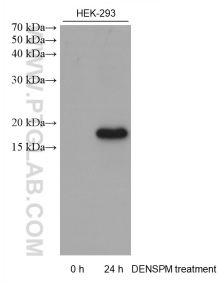
T: 1 (888) 4PTGLAB (1-888-478-4522) (toll free in USA), or 1(312) 455-8498 (outside USA)

E: proteintech@ptglab.com

W: ptglab.com

This product is exclusively available under Proteintech Group brand and is not available to purchase from any other manufacturer.

Selected Validation Data



Untreated and DENS PM treated HEK-293 cells were subjected to SDS PAGE followed by western blot with 68928-1-Ig (SAT1 antibody) at dilution of 1:10000 incubated at room temperature for 1.5 hours. This data was developed using the same antibody clone with 68928-1-PBS in a different storage buffer formulation.