

For Research Use Only

# SAT1 Monoclonal antibody

Catalog Number: 68928-1-Ig



## Basic Information

<b>Catalog Number:</b> 68928-1-Ig	<b>GenBank Accession Number:</b> BC008424	<b>Purification Method:</b> Protein A purification
<b>Size:</b> 150ul , Concentration: 1000 ug/ml by Nanodrop;	<b>GeneID (NCBI):</b> 6303	<b>CloneNo.:</b> 1F3E4
<b>Source:</b> Mouse	<b>UNIPROT ID:</b> P21673	<b>Recommended Dilutions:</b> WB 1:5000-1:50000
<b>Isotype:</b> IgG2a	<b>Full Name:</b> spermidine/spermine N1-acetyltransferase 1	
<b>Immunogen Catalog Number:</b> AG33644	<b>Calculated MW:</b> 20 kDa	
	<b>Observed MW:</b> 15-25 kDa	

## Applications

<b>Tested Applications:</b> WB, ELISA	<b>Positive Controls:</b> WB : HEK-293 cells,
<b>Species Specificity:</b> human	

## Storage

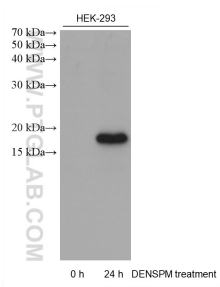
**Storage:**  
Store at -20°C. Stable for one year after shipment.  
**Storage Buffer:**  
PBS with 0.02% sodium azide and 50% glycerol pH 7.3.  
Aliquoting is unnecessary for -20°C storage

**\*\*\* 20ul sizes contain 0.1% BSA**

For technical support and original validation data for this product please contact:  
T: 1 (888) 4PTGLAB (1-888-478-4522) (toll free in USA), or 1(312) 455-8498 (outside USA)      E: proteintech@ptglab.com  
W: ptglab.com

This product is exclusively available under Proteintech Group brand and is not available to purchase from any other manufacturer.

## Selected Validation Data



Untreated and DENS PM treated HEK-293 cells were subjected to SDS PAGE followed by western blot with 68928-1-Ig (SAT1 antibody) at dilution of 1:10000 incubated at room temperature for 1.5 hours.