

For Research Use Only

ARF6 Monoclonal antibody

Catalog Number: 68924-1-Ig



Basic Information

Catalog Number: 68924-1-Ig	GenBank Accession Number: BC002952	Purification Method: Protein G purification
Size: 150ul , Concentration: 1000 ug/ml by Nanodrop;	GeneID (NCBI): 382	CloneNo.: 1H5H1
Source: Mouse	UNIPROT ID: P62330	Recommended Dilutions: WB 1:5000-1:50000
Isotype: IgG1	Full Name: ADP-ribosylation factor 6	
Immunogen Catalog Number: AG12642	Calculated MW: 20 kDa	
	Observed MW: 17-20 kDa	

Applications

Tested Applications: WB, ELISA	Positive Controls: WB : LNCaP cells, HEK-293 cells, MCF-7 cells, pig liver tissue
Species Specificity: human, pig	

Background Information

ADP-ribosylation factors (ARFs) are members of the ARF family of GTP-binding proteins of the Ras superfamily, with 20 kDa protein size. ARFs bind and regulate GTP/GDP cycle by alternating between the active GTP-bound and inactive GDP-bound conformations. ARF family proteins are essential and ubiquitous in eukaryotes. Six highly conserved members of the family have been identified in mammalian cells. They function in vesicular traffic and actin remodelling and other bioprocesses in cells. The ARF6 is one of best identified ARFs. It is present at the plasma membrane and to some extent on endosomal membranes where it regulates the flow of trafficking into and out of the cell and the actin cytoskeleton. The antibody is specific to ARF6.

Storage

Storage:
Store at -20°C. Stable for one year after shipment.
Storage Buffer:
PBS with 0.02% sodium azide and 50% glycerol pH 7.3.
Aliquoting is unnecessary for -20°C storage

*** 20ul sizes contain 0.1% BSA

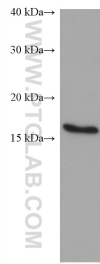
For technical support and original validation data for this product please contact:

T: 1 (888) 4PTGLAB (1-888-478-4522) (toll free
in USA), or 1(312) 455-8498 (outside USA)

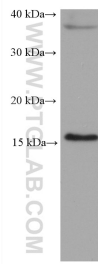
E: proteintech@ptglab.com
W: ptglab.com

This product is exclusively available under Proteintech Group brand and is not available to purchase from any other manufacturer.

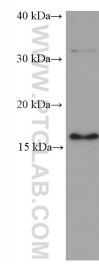
Selected Validation Data



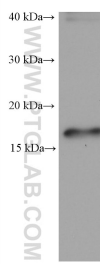
LNCaP cells were subjected to SDS PAGE followed by western blot with 68924-1-Ig (ARF6 antibody) at dilution of 1:10000 incubated at room temperature for 1.5 hours.



MCF-7 cells were subjected to SDS PAGE followed by western blot with 68924-1-Ig (ARF6 antibody) at dilution of 1:10000 incubated at room temperature for 1.5 hours.



HEK-293 cells were subjected to SDS PAGE followed by western blot with 68924-1-Ig (ARF6 antibody) at dilution of 1:10000 incubated at room temperature for 1.5 hours.



pig liver tissue were subjected to SDS PAGE followed by western blot with 68924-1-Ig (ARF6 antibody) at dilution of 1:10000 incubated at room temperature for 1.5 hours.