

For Research Use Only

# BRD9 Monoclonal antibody

Catalog Number: 68922-1-Ig



## Basic Information

<b>Catalog Number:</b> 68922-1-Ig	<b>GenBank Accession Number:</b> BC041590	<b>Purification Method:</b> Protein G purification
<b>Size:</b> 150ul , Concentration: 1000 ug/ml by Nanodrop;	<b>GeneID (NCBI):</b> 65980	<b>CloneNo.:</b> 1C10F2
<b>Source:</b> Mouse	<b>UNIPROT ID:</b> Q9H8M2	<b>Recommended Dilutions:</b> WB 1:5000-1:50000
<b>Isotype:</b> IgG1	<b>Full Name:</b> bromodomain containing 9	
<b>Immunogen Catalog Number:</b> AG20438	<b>Calculated MW:</b> 597 aa, 67 kDa	
	<b>Observed MW:</b> 70 kDa	

## Applications

**Tested Applications:**  
WB, FC (Intra), ELISA

**Species Specificity:**  
human

**Positive Controls:**

WB : LNCaP cells, HeLa cells, HEK-293 cells, MCF-7 cells, MDA-MB-231 cells

## Background Information

BRD9, also named as MU-RMS-40.8, may play a role in chromatin remodeling and regulation of transcription.

## Storage

**Storage:**  
Store at -20°C. Stable for one year after shipment.

**Storage Buffer:**  
PBS with 0.02% sodium azide and 50% glycerol pH 7.3.

Aliquoting is unnecessary for -20°C storage

\*\*\* 20ul sizes contain 0.1% BSA

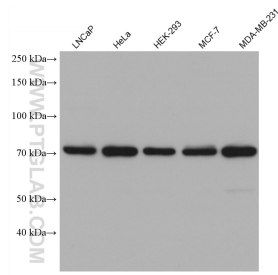
For technical support and original validation data for this product please contact:

T: 1 (888) 4PTGLAB (1-888-478-4522) (toll free in USA), or 1(312) 455-8498 (outside USA)

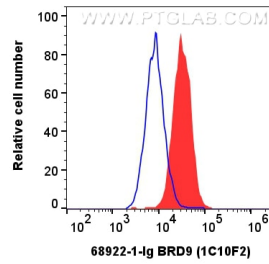
E: [proteintech@ptglab.com](mailto:proteintech@ptglab.com)  
W: [ptglab.com](http://ptglab.com)

This product is exclusively available under Proteintech Group brand and is not available to purchase from any other manufacturer.

## Selected Validation Data



Various lysates were subjected to SDS PAGE followed by western blot with 68922-1-Ig (BRD9 antibody) at dilution of 1:10000 incubated at room temperature for 1.5 hours.



$1 \times 10^6$  HeLa cells were intracellularly stained with 0.2  $\mu$ g BRD9 Monoclonal antibody (68922-1-Ig, Clone:1C10F2, red) and CoraLite488-conjugated Goat Anti-Mouse IgG(H+L) (Cat.NO. SA00013-1), and 0.2  $\mu$ g Mouse IgG1 isotype Control Antibody (66360-1-Ig, Clone: T1F8D3F10, blue) was stained parallelly as control. Cells were fixed with 4% PFA.