

For Research Use Only

S100A9 Monoclonal antibody

Catalog Number: 68900-1-Ig



Basic Information

Catalog Number: 68900-1-Ig	GenBank Accession Number: BC047681	Purification Method: Protein G purification
Size: 150ul , Concentration: 1000 ug/ml by Nanodrop;	GeneID (NCBI): 6280	CloneNo.: 1E12C1
Source: Mouse	UNIPROT ID: P06702	Recommended Dilutions: WB 1:5000-1:50000
Isotype: IgG1	Full Name: S100 calcium binding protein A9	
Immunogen Catalog Number: AG27025	Calculated MW: 13 kDa	
	Observed MW: 14 kDa	

Applications

Tested Applications: WB, ELISA	Positive Controls: WB : human saliva, HT-1376 cells, MDA-MB-468 cells, SK-BR-3 cells
Species Specificity: human	

Background Information

S100A9 is a calcium binding protein as a member of the S100 family of proteins. S100 proteins are low molecular weight (9 to 14 kDa) intracellular calcium-binding proteins that control key cellular pathways including regulation of the cytoskeleton, cell migration and adhesion, and host oxidative defense. S100A9 may exist as a homodimer, heterodimer (24 kDa) with an S100A8 partner (S100A8/A9), or as a heterotetramer (28 kDa) with an S100A8 partner(S100A8/A9). S100A8 and S100A9 are found intracellularly in granulocytes, monocytes, and early differentiation stages of macrophages.

Storage

Storage:
Store at -20°C. Stable for one year after shipment.
Storage Buffer:
PBS with 0.02% sodium azide and 50% glycerol pH 7.3.
Aliquoting is unnecessary for -20°C storage

*** 20ul sizes contain 0.1% BSA

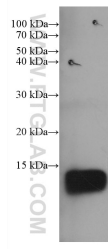
For technical support and original validation data for this product please contact:

T: 1 (888) 4PTGLAB (1-888-478-4522) (toll free in USA), or 1(312) 455-8498 (outside USA)

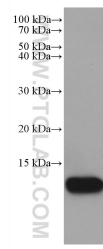
E: proteintech@ptglab.com
W: ptglab.com

This product is exclusively available under Proteintech Group brand and is not available to purchase from any other manufacturer.

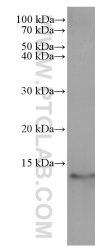
Selected Validation Data



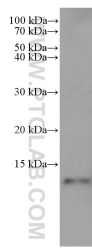
human saliva were subjected to SDS PAGE followed by western blot with 68900-1-Ig (S100A9 antibody) at dilution of 1:10000 incubated at room temperature for 1.5 hours.



MDA-MB-468 cells were subjected to SDS PAGE followed by western blot with 68900-1-Ig (S100A9 antibody) at dilution of 1:10000 incubated at room temperature for 1.5 hours.



HT-1376 cells were subjected to SDS PAGE followed by western blot with 68900-1-Ig (S100A9 antibody) at dilution of 1:10000 incubated at room temperature for 1.5 hours.



SK-BR-3 cells were subjected to SDS PAGE followed by western blot with 68900-1-Ig (S100A9 antibody) at dilution of 1:10000 incubated at room temperature for 1.5 hours.