

For Research Use Only

# MDH2 Monoclonal antibody

Catalog Number: 68878-1-Ig



## Basic Information

<b>Catalog Number:</b> 68878-1-Ig	<b>GenBank Accession Number:</b> BC001917	<b>Purification Method:</b> Protein A purification
<b>Size:</b> 150ul , Concentration: 1000 µg/ml by Nanodrop;	<b>GeneID (NCBI):</b> 4191	<b>CloneNo.:</b> 2A9G11
<b>Source:</b> Mouse	<b>UNIPROT ID:</b> P40926	<b>Recommended Dilutions:</b> WB 1:5000-1:50000
<b>Isotype:</b> IgG2b	<b>Full Name:</b> malate dehydrogenase 2, NAD (mitochondrial)	
<b>Immunogen Catalog Number:</b> AG7750	<b>Calculated MW:</b> 36 kDa	
	<b>Observed MW:</b> 33 kDa	

## Applications

<b>Tested Applications:</b> WB, ELISA	<b>Positive Controls:</b> WB : LNCaP cells, MCF-7 cells, HeLa cells, HEK-293 cells, HepG2 cells, Jurkat cells, K-562 cells
<b>Species Specificity:</b> human	

## Background Information

MDH2 encodes the Krebs cycle enzyme mitochondrial malate dehydrogenase, which catalyzes the reversible oxidation of malate to oxaloacetate and plays a role in the malate-aspartate NADH shuttle. Mutations in MDH2 Cause Developmental and epileptic encephalopathy 51 (PMID: 27989324).

## Storage

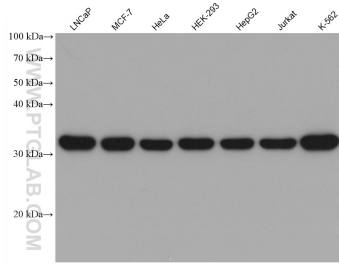
**Storage:**  
Store at -20°C. Stable for one year after shipment.  
**Storage Buffer:**  
PBS with 0.02% sodium azide and 50% glycerol pH 7.3.  
Aliquoting is unnecessary for -20°C storage

\*\*\* 20ul sizes contain 0.1% BSA

For technical support and original validation data for this product please contact:  
T: 1 (888) 4PTGLAB (1-888-478-4522) (toll free in USA), or 1(312) 455-8498 (outside USA)      E: proteintech@ptglab.com  
W: ptglab.com

This product is exclusively available under Proteintech Group brand and is not available to purchase from any other manufacturer.

## Selected Validation Data



Various lysates were subjected to SDS PAGE followed by western blot with 68878-1-Ig (MDH2 antibody) at dilution of 1:20000 incubated at room temperature for 1.5 hours.