

For Research Use Only

Cytokeratin 7 Monoclonal antibody, PBS Only (Capture)

Catalog Number: 68859-1-PBS



Basic Information

Catalog Number: 68859-1-PBS	GenBank Accession Number: BC002700	Purification Method: Protein G Magarose purification
Size: 100ug , Concentration: 1 mg/ml by Nanodrop;	GeneID (NCBI): 3855	CloneNo.: 3D4A7
Source: Mouse	UNIPROT ID: P08729	
Isotype: IgG1	Full Name: keratin 7	
Immunogen Catalog Number: AG17703	Calculated MW: 469 aa, 51 kDa	

Applications

Tested Applications:
Cytometric bead array, Sandwich ELISA, Indirect ELISA, Sample test

Species Specificity:
human

Product Information

68859-1-PBS targets Cytokeratin 7 as part of a matched antibody pair:

MP50253-1: 68859-1-PBS capture and 68859-2-PBS detection (validated in Cytometric bead array, Sandwich ELISA)

MP50253-2: 68859-1-PBS capture and 68859-3-PBS detection (validated in Cytometric bead array)

Unconjugated mouse monoclonal antibody pair in PBS only (BSA and azide free) storage buffer at a concentration of 1 mg/mL, ready for conjugation.

This conjugation ready format makes antibodies ideal for use in many applications including: ELISAs, multiplex assays requiring matched pairs, mass cytometry, and multiplex imaging applications. Antibody use should be optimized by the end user for each application and assay.

Storage

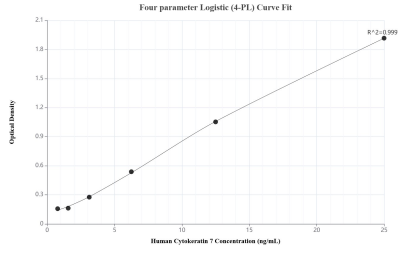
Storage:
Store at -80°C.

Storage Buffer:
PBS Only

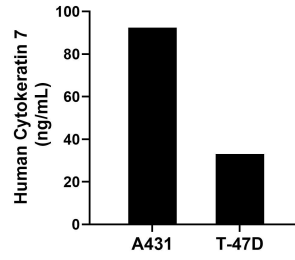
For technical support and original validation data for this product please contact:
T: 1 (888) 4PTGLAB (1-888-478-4522) (toll free in USA), or 1(312) 455-8498 (outside USA) E: proteintech@ptglab.com
W: ptglab.com

This product is exclusively available under Proteintech Group brand and is not available to purchase from any other manufacturer.

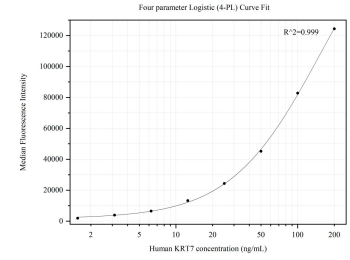
Selected Validation Data



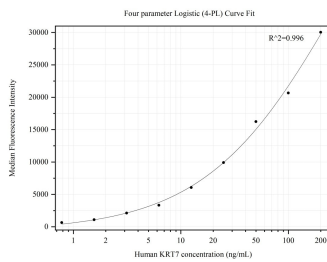
Sandwich ELISA standard curve of MP50253-1, Human Cytokeratin 7 Monoclonal Matched Antibody Pair - PBS only. 68859-1-PBS was coated to a plate as the capture antibody and incubated with serial dilutions of standard Ag17703. 68859-2-PBS was HRP conjugated as the detection antibody. Range: 0.781-25 ng/mL



The mean Cytokeratin 7 concentration was determined to be 92.40 ng/mL in A431 cell extract based on a 1.50 mg/mL extract load and 33.00 ng/mL in T-47D cell extract based on a 1.80 mg/mL extract load.



Cytometric bead array standard curve of MP50253-1, KRT7 Monoclonal Matched Antibody Pair, PBS Only. Capture antibody: 68859-1-PBS. Detection antibody: 68859-2-PBS. Standard: Ag17703. Range: 1.563-200 ng/mL.



Cytometric bead array standard curve of MP50253-2, KRT7 Monoclonal Matched Antibody Pair, PBS Only. Capture antibody: 68859-1-PBS. Detection antibody: 68859-3-PBS. Standard: Ag17703. Range: 1.563-200 ng/mL