

For Research Use Only

# CLCC1 Monoclonal antibody

Catalog Number: 68853-7-Ig



## Basic Information

<b>Catalog Number:</b> 68853-7-Ig	<b>GenBank Accession Number:</b> BC002939	<b>Purification Method:</b> Protein G purification
<b>Size:</b> 150ul , Concentration: 1000 ug/ml by Nanodrop;	<b>GeneID (NCBI):</b> 23155	<b>CloneNo.:</b> 3C4B4
<b>Source:</b> Mouse	<b>UNIPROT ID:</b> Q96566	<b>Recommended Dilutions:</b> WB 1:5000-1:50000
<b>Isotype:</b> IgG1	<b>Full Name:</b> chloride channel CLIC-like 1	
<b>Immunogen Catalog Number:</b> AG24682	<b>Calculated MW:</b> 551 aa, 62 kDa	
	<b>Observed MW:</b> 50-60 kDa	

## Applications

<b>Tested Applications:</b> WB, ELISA	<b>Positive Controls:</b> WB : COLO 320 cells, HepG2 cells, hTERT-RPE1 cells, HeLa cells, K-562 cells, FaDu cells, SiHa cells, SCaBER cells, MG-63 cells, MDA-MB-468 cells
<b>Species Specificity:</b> human	

## Background Information

CLCC1, also known as MCLC, is a transmembrane protein that localizes to intracellular compartments, including endoplasmic reticulum (ER), and it functions as a chloride channel (PMID: 11279057). It has been shown that loss of CLCC1 results in ER Stress, misfolded protein accumulation, and neurodegeneration (PMID: 25698737). CLCC1 forms homomultimer in the ER membrane and is a pore-forming component of an anion channel. Studies found that disruption of ER ion homeostasis maintained by CLCC1 is one of the causes of neurodegenerative diseases, such as ALS (amyotrophic lateral sclerosis) (PMID: 37142673).

## Storage

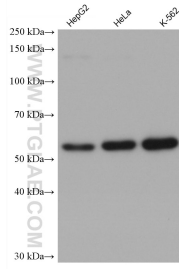
**Storage:**  
Store at -20°C. Stable for one year after shipment.  
**Storage Buffer:**  
PBS with 0.02% sodium azide and 50% glycerol pH 7.3.  
Aliquoting is unnecessary for -20°C storage

\*\*\* 20ul sizes contain 0.1% BSA

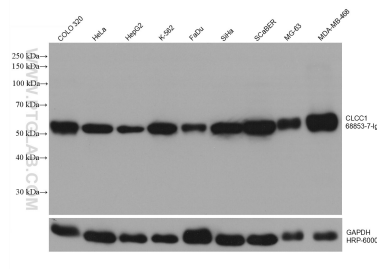
For technical support and original validation data for this product please contact:  
T: 1 (888) 4PTGLAB (1-888-478-4522) (toll free in USA), or 1(312) 455-8498 (outside USA)  
E: proteintech@ptglab.com  
W: ptglab.com

This product is exclusively available under Proteintech Group brand and is not available to purchase from any other manufacturer.

## Selected Validation Data



Various lysates were subjected to SDS PAGE followed by western blot with 68853-7-Ig (CLCC1 antibody) at dilution of 1:4000 incubated at room temperature for 1.5 hours.



Various lysates were subjected to SDS PAGE followed by western blot with 68853-7-Ig (CLCC1 antibody) at dilution of 1:10000 incubated at room temperature for 1.5 hours.