

For Research Use Only

CHMP4B Monoclonal antibody

Catalog Number: 68811-1-Ig



Basic Information

Catalog Number: 68811-1-Ig	GenBank Accession Number: BC033859	Purification Method: Protein G purification
Size: 150ul , Concentration: 1000 µg/ml by Nanodrop;	GeneID (NCBI): 128866	CloneNo.: 1D4G10
Source: Mouse	UNIPROT ID: Q9H444	Recommended Dilutions: WB 1:5000-1:50000 IF/ICC 1:1000-1:4000
Isotype: IgG1	Full Name: chromatin modifying protein 4B	
Immunogen Catalog Number: AG4544	Calculated MW: 224 aa, 25 kDa	
	Observed MW: 33 kDa	

Applications

Tested Applications: WB, IF, ELISA	Positive Controls:
Species Specificity: Human	WB : LNCaP cells, HeLa cells, HepG2 cells, Jurkat cells, MOLT-4 cells IF/ICC : HCT 116 cells,

Background Information

CHMP4B (charged multivesicular body protein 4b) is a human homologue of yeast Snf7p (also named Vps32p) and a member of CHMP family which is implicated in multivesicular body (MVB) sorting. The CHMP proteins are components of ESCRT-III (endosomal sorting complex required for transport III), a complex involved in degradation of surface receptor proteins and formation of endocytic multivesicular bodies. Among seven CHMP family members, only CHMP4 has been found to interact with Alix, a multifunctional adaptor protein in various cellular functions. This antibody is highly specific to the CHMP4B and it doesn't cross-react with other CHMPs as well as other CHMP4s (CHMP4A and CHMP4C). CHMP4B can be detected 25-33 kDa by post-translational modification (PMID:26490837).

Storage

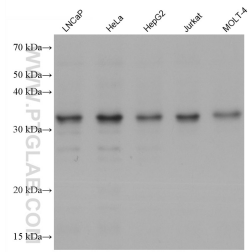
Storage:
Store at -20°C. Stable for one year after shipment.
Storage Buffer:
PBS with 0.02% sodium azide and 50% glycerol pH 7.3.
Aliquoting is unnecessary for -20°C storage

*** 20ul sizes contain 0.1% BSA

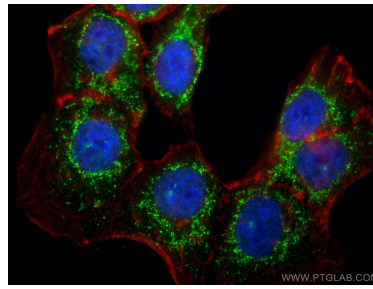
For technical support and original validation data for this product please contact:
T: 1 (888) 4PTGLAB (1-888-478-4522) (toll free in USA), or 1(312) 455-8498 (outside USA)
E: proteintech@ptglab.com
W: ptglab.com

This product is exclusively available under Proteintech Group brand and is not available to purchase from any other manufacturer.

Selected Validation Data



Various lysates were subjected to SDS PAGE followed by western blot with 68811-1-Ig (CHMP4B antibody) at dilution of 1:20000 incubated at room temperature for 1.5 hours.



Immunofluorescent analysis of (4% PFA) fixed HCT 116 cells using CHMP4B antibody (68811-1-Ig, Clone: 1D4G10) at dilution of 1:2000 and CoraLite®488-Conjugated AffiniPure Goat Anti-Mouse IgG(H+L) (SA00013-1), CL594-phalloidin (red).