

For Research Use Only

# Ezrin Monoclonal antibody, PBS Only (Capture)

Catalog Number: 68789-1-PBS



## Basic Information

<b>Catalog Number:</b> 68789-1-PBS	<b>GenBank Accession Number:</b> BC013903	<b>Purification Method:</b> Protein G Magarose purification
<b>Size:</b> 100ug , Concentration: 1mg/ml by Nanodrop;	<b>GeneID (NCBI):</b> 7430	<b>CloneNo.:</b> 1C11A7
<b>Source:</b> Mouse	<b>ENSEMBL Gene ID:</b> ENSG00000092820	
<b>Isotype:</b> IgG1	<b>UNIPROT ID:</b> P15311	
	<b>Full Name:</b> ezrin	
	<b>Calculated MW:</b> 69 kDa	

## Applications

**Tested Applications:**  
Cytometric bead array, Indirect ELISA, Sample test

**Species Specificity:**  
human

## Product Information

68789-1-PBS targets Ezrin as part of a matched antibody pair:

MP50155-1: 68789-1-PBS capture and 68789-2-PBS detection (validated in Cytometric bead array)

Unconjugated mouse monoclonal antibody pair in PBS only (BSA and azide free) storage buffer at a concentration of 1 mg/mL, ready for conjugation.

This conjugation ready format makes antibodies ideal for use in many applications including: ELISAs, multiplex assays requiring matched pairs, mass cytometry, and multiplex imaging applications. Antibody use should be optimized by the end user for each application and assay.

## Storage

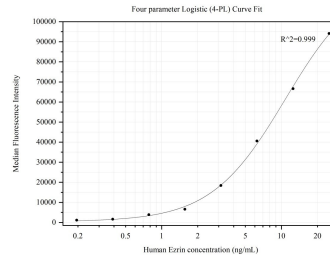
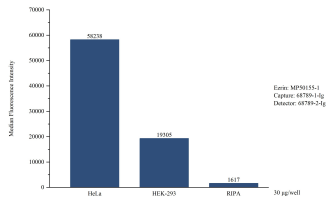
**Storage:**  
Store at -80°C.

**Storage Buffer:**  
PBS Only

For technical support and original validation data for this product please contact:  
T: 1 (888) 4PTGLAB (1-888-478-4522) (toll free in USA), or 1(312) 455-8498 (outside USA)      E: proteintech@ptglab.com  
W: ptglab.com

This product is exclusively available under Proteintech Group brand and is not available to purchase from any other manufacturer.

## Selected Validation Data



Cytometric bead array in cell lysate using MP50155-1, Ezrin Monoclonal Matched Antibody Pair, PBS Only. Capture antibody: 68789-1-PBS. Detection antibody: 68789-2-PBS. Cell lysate: HeLa, HEK293. RIPA lysis buffer was served as blank control.

Cytometric bead array standard curve of MP50155-1, Ezrin Monoclonal Matched Antibody Pair, PBS Only. Capture antibody: 68789-1-PBS. Detection antibody: 68789-2-PBS. Standard:SY02111P. Range: 0.195-25 ng/mL.