

For Research Use Only

SLC35A1 Monoclonal antibody, PBS Only (Detector)



Catalog Number: 68788-2-PBS

Basic Information

Catalog Number: 68788-2-PBS	GenBank Accession Number: BC017807	Purification Method: Protein G Magarose purification
Size: 100ug , Concentration: 1mg/ml by Nanodrop;	GeneID (NCBI): 10559	CloneNo.: 1D5C8
Source: Mouse	UNIPROT ID: P78382	
Isotype: IgG1	Full Name: solute carrier family 35 (CMP-sialic acid transporter), member A1	
Immunogen Catalog Number: AG9524	Calculated MW: 337 aa, 37 kDa	

Applications

Tested Applications:
Indirect ELISA, Cytometric bead array

Species Specificity:
Human

Product Information

68788-2-PBS targets SLC35A1 as part of a matched antibody pair:

MP50154-1: 68788-1-PBS capture and 68788-2-PBS detection (validated in Cytometric bead array, Sandwich ELISA)

MP50154-2: 68788-3-PBS capture and 68788-2-PBS detection (validated in Cytometric bead array, Sandwich ELISA)

Unconjugated mouse monoclonal antibody pair in PBS only (BSA and azide free) storage buffer at a concentration of 1 mg/mL, ready for conjugation.

This conjugation ready format makes antibodies ideal for use in many applications including: ELISAs, multiplex assays requiring matched pairs, mass cytometry, and multiplex imaging applications. Antibody use should be optimized by the end user for each application and assay.

Storage

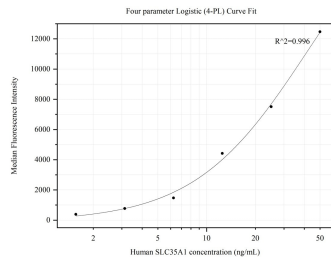
Storage:
Store at -80°C.

Storage Buffer:
PBS Only

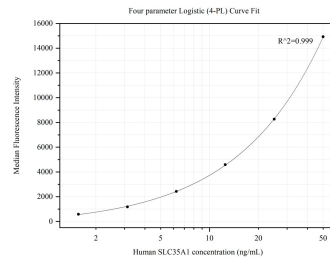
For technical support and original validation data for this product please contact:
T: 1 (888) 4PTGLAB (1-888-478-4522) (toll free in USA), or 1(312) 455-8498 (outside USA) E: proteintech@ptglab.com
W: ptglab.com

This product is exclusively available under Proteintech Group brand and is not available to purchase from any other manufacturer.

Selected Validation Data



Cytometric bead array standard curve of MP50154-1, SLC35A1 Monoclonal Matched Antibody Pair, PBS Only. Capture antibody: 68788-1-PBS. Detection antibody: 68788-2-PBS. Standard: Ag9524. Range: 1.563-50 ng/mL



Cytometric bead array standard curve of MP50154-2, SLC35A1 Monoclonal Matched Antibody Pair, PBS Only. Capture antibody: 68788-3-PBS. Detection antibody: 68788-2-PBS. Standard: Ag9524. Range: 1.563-50 ng/mL