

For Research Use Only

SLC7A11 Monoclonal antibody, PBS Only (Capture)

Catalog Number: 68785-1-PBS



Basic Information

Catalog Number:

68785-1-PBS

Size:

100ug, Concentration: 1mg/ml by Nanodrop;

Source:

Mouse

Isotype:

IgG1

Immunogen Catalog Number:

AG30611

GenBank Accession Number:

BC012087

GeneID (NCBI):

23657

UNIPROT ID:

Q9UPY5

Full Name:

solute carrier family 7, (cationic amino acid transporter, y+ system) member 11

Calculated MW:

55 kDa

Purification Method:

Protein G Magarose purification

CloneNo.:

3D7H10

Applications

Tested Applications:

Indirect ELISA, Cytometric bead array

Species Specificity:

Human

Product Information

68785-1-PBS targets SLC7A11 as part of a matched antibody pair:

MP50151-1: 68785-1-PBS capture and 68785-2-PBS detection (validated in Cytometric bead array, Sandwich ELISA)

Unconjugated mouse monoclonal antibody pair in PBS only (BSA and azide free) storage buffer at a concentration of 1 mg/mL, ready for conjugation.

This conjugation ready format makes antibodies ideal for use in many applications including: ELISAs, multiplex assays requiring matched pairs, mass cytometry, and multiplex imaging applications. Antibody use should be optimized by the end user for each application and assay.

Storage

Storage:

Store at -80°C.

Storage Buffer:

PBS Only

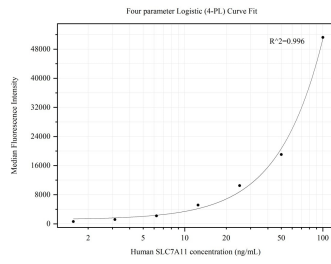
For technical support and original validation data for this product please contact:

T: 1 (888) 4PTGLAB (1-888-478-4522) (toll free in USA), or 1(312) 455-8498 (outside USA)

E: proteintech@ptglab.com
W: ptglab.com

This product is exclusively available under Proteintech Group brand and is not available to purchase from any other manufacturer.

Selected Validation Data



Cytometric bead array standard curve of MP50151-1, SLC7A11 Monoclonal Matched Antibody Pair, PBS Only. Capture antibody: 68785-1-PBS. Detection antibody: 68785-2-PBS. Standard:Ag30611. Range: 1.563-100 ng/mL.