

For Research Use Only

# PTGDS Monoclonal antibody, PBS Only

Catalog Number: 68783-3-PBS



## Basic Information

<b>Catalog Number:</b> 68783-3-PBS	<b>GenBank Accession Number:</b> BC005939	<b>Purification Method:</b> Protein A purification
<b>Size:</b> 100ug , Concentration: 1 mg/ml by Nanodrop;	<b>GeneID (NCBI):</b> 5730	<b>CloneNo.:</b> 2D6E7
<b>Source:</b> Mouse	<b>UNIPROT ID:</b> P41222	
<b>Isotype:</b> IgG2a	<b>Full Name:</b> prostaglandin D2 synthase 21kDa (brain)	
<b>Immunogen Catalog Number:</b> AG34483	<b>Calculated MW:</b> 21 kDa	
	<b>Observed MW:</b> 28 kDa	

## Applications

**Tested Applications:**  
WB, Indirect ELISA

**Species Specificity:**  
human, mouse, rat, pig, rabbit

## Background Information

Glycoprotein prostaglandin D2 synthase (PTGDS), also known as L-PGDS, PGDS, and LPGDS, is a member of the lipocalin superfamily and plays dual roles in prostaglandins metabolism and lipid transport (PMID: 34743203). PTGD2 functions as a neuromodulator as well as a trophic factor in the central nervous system. PTGD2 is also involved in smooth muscle contraction/relaxation and is a potent inhibitor of platelet aggregation. PTGDS is abundantly expressed in the brain and heart and has also been found in testis, prostate, kidney, spleen and leukocytes. It can be found as a collection of monomeric glycoforms with molecular weights in the 27-34 kDa range (PMID: 32430846).

## Storage

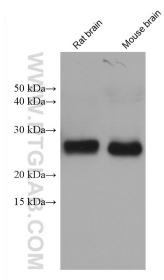
**Storage:**  
Store at -80°C.

**Storage Buffer:**  
PBS Only

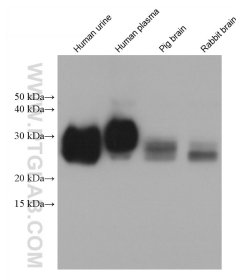
For technical support and original validation data for this product please contact:  
T: 1 (888) 4PTGLAB (1-888-478-4522) (toll free in USA), or 1(312) 455-8498 (outside USA)      E: proteintech@ptglab.com  
W: ptglab.com

This product is exclusively available under Proteintech Group brand and is not available to purchase from any other manufacturer.

## Selected Validation Data



Various lysates were subjected to SDS PAGE followed by western blot with 68783-3-Ig (PGDS antibody) at dilution of 1:20000 incubated at room temperature for 1.5 hours. This data was developed using the same antibody clone with 68783-3-PBS in a different storage buffer formulation.



Various lysates were subjected to SDS PAGE followed by western blot with 68783-3-Ig (PGDS antibody) at dilution of 1:20000 incubated at room temperature for 1.5 hours. This data was developed using the same antibody clone with 68783-3-PBS in a different storage buffer formulation.