

For Research Use Only

CALCA/CGRP Monoclonal antibody

Catalog Number: 68774-1-Ig



Basic Information

Catalog Number: 68774-1-Ig	GenBank Accession Number: BC093753	Purification Method: Protein G purification
Size: 150ul , Concentration: 1000 ug/ml by Nanodrop and 684 ug/ml by Bradford method using BSA as the standard;	GeneID (NCBI): 796	CloneNo.: 1A12A1
Source: Mouse	UNIPROT ID: P06881	Recommended Dilutions: WB 1:2000-1:10000 IHC 1:500-1:2000
Isotype: IgG1	Full Name: calcitonin-related polypeptide alpha	
Immunogen Catalog Number: AG26141	Calculated MW: 141 aa, 15 kDa	
	Observed MW: 14 kDa	

Applications

Tested Applications: WB, IHC, ELISA	Positive Controls:
Species Specificity: Human	WB : TT cells, IHC : human thyroid cancer tissue,

Note-IHC: suggested antigen retrieval with TE buffer pH 9.0; (*) Alternatively, antigen retrieval may be performed with citrate buffer pH 6.0

Background Information

Calcitonin gene-related peptide (CGRP) is a 37-amino acid neuropeptide, which is primarily localized to C and A δ sensory fibers. These fibers display a wide innervation throughout the body, with extensive perivascular localization, and have a dual role in sensory (nociceptive) and efferent (effector) function. Discovered 30 years ago, it is produced as a consequence of alternative RNA processing of the calcitonin gene. CGRP has two major forms (α and β).

Storage

Storage:
Store at -20°C. Stable for one year after shipment.
Storage Buffer:
PBS with 0.02% sodium azide and 50% glycerol pH 7.3.
Aliquoting is unnecessary for -20°C storage

*** 20ul sizes contain 0.1% BSA

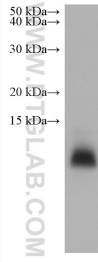
For technical support and original validation data for this product please contact:

T: 1 (888) 4PTGLAB (1-888-478-4522) (toll free in USA), or 1(312) 455-8498 (outside USA)

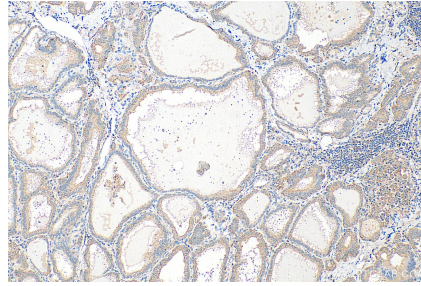
E: proteintech@ptglab.com
W: ptglab.com

This product is exclusively available under Proteintech Group brand and is not available to purchase from any other manufacturer.

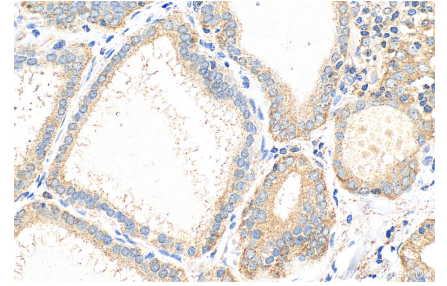
Selected Validation Data



TT cells were subjected to SDS PAGE followed by western blot with 68774-1-Ig (CALCA/CGRP antibody) at dilution of 1:5000 incubated at room temperature for 1.5 hours.



Immunohistochemical analysis of paraffin-embedded human thyroid cancer tissue slide using 68774-1-Ig (CALCA/CGRP antibody) at dilution of 1:1000 (under 10x lens). Heat mediated antigen retrieval with Tris-EDTA buffer (pH 9.0).



Immunohistochemical analysis of paraffin-embedded human thyroid cancer tissue slide using 68774-1-Ig (CALCA/CGRP antibody) at dilution of 1:1000 (under 40x lens). Heat mediated antigen retrieval with Tris-EDTA buffer (pH 9.0).