

For Research Use Only

CD80 Monoclonal antibody, PBS Only (Detector)

Catalog Number: 68746-2-PBS



Basic Information

Catalog Number: 68746-2-PBS	GenBank Accession Number: NM_005191	Purification Method: Protein G purification
Size: 100ug, Concentration: 1 mg/ml by Nanodrop;	GeneID (NCBI): 941	CloneNo.: 2A11D5
Source: Mouse	UNIPROT ID: P33681	
Isotype: IgG1	Full Name: CD80 molecule	

Applications

Tested Applications:
Cytometric bead array, Indirect ELISA

Species Specificity:
human

Product Information

68746-2-PBS targets CD80 as part of a matched antibody pair:

MP50098-1: 68746-1-PBS capture and 68746-2-PBS detection (validated in Cytometric bead array, Sandwich ELISA)

Unconjugated mouse monoclonal antibody pair in PBS only (BSA and azide free) storage buffer at a concentration of 1 mg/mL, ready for conjugation.

This conjugation ready format makes antibodies ideal for use in many applications including: ELISAs, multiplex assays requiring matched pairs, mass cytometry, and multiplex imaging applications. Antibody use should be optimized by the end user for each application and assay.

Storage

Storage:
Store at -80°C.
Storage Buffer:
PBS Only

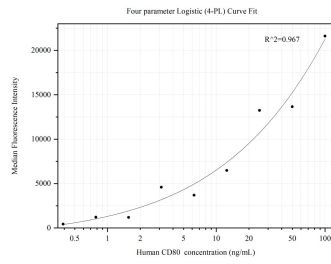
For technical support and original validation data for this product please contact:

T: 1 (888) 4PTGLAB (1-888-478-4522) (toll free
in USA), or 1(312) 455-8498 (outside USA)

E: proteintech@ptglab.com
W: ptglab.com

This product is exclusively available under Proteintech Group brand and is not available to purchase from any other manufacturer.

Selected Validation Data



Cytometric bead array standard curve of MP50098-1, CD80/B7-1 Monoclonal Matched Antibody Pair, PBS Only. Capture antibody: 68746-1-PBS. Detection antibody: 68746-2-PBS. Standard:Eg0060. Range: 0.391-100 ng/mL