

For Research Use Only

# CD80 Monoclonal antibody, PBS Only (Capture)

Catalog Number: 68746-1-PBS



## Basic Information

<b>Catalog Number:</b> 68746-1-PBS	<b>GenBank Accession Number:</b> NM_005191	<b>Purification Method:</b> Protein G purification
<b>Size:</b> 100ug, Concentration: 1 mg/ml by Nanodrop;	<b>GeneID (NCBI):</b> 941	<b>CloneNo.:</b> 1A10C6
<b>Source:</b> Mouse	<b>UNIPROT ID:</b> P33681	
<b>Isotype:</b> IgG1	<b>Full Name:</b> CD80 molecule	

## Applications

**Tested Applications:**  
Cytometric bead array, Indirect ELISA

**Species Specificity:**  
human

## Product Information

68746-1-PBS targets CD80 as part of a matched antibody pair:

MP50098-1: 68746-1-PBS capture and 68746-2-PBS detection (validated in Cytometric bead array, Sandwich ELISA)

Unconjugated mouse monoclonal antibody pair in PBS only (BSA and azide free) storage buffer at a concentration of 1 mg/mL, ready for conjugation.

This conjugation ready format makes antibodies ideal for use in many applications including: ELISAs, multiplex assays requiring matched pairs, mass cytometry, and multiplex imaging applications. Antibody use should be optimized by the end user for each application and assay.

## Storage

**Storage:**  
Store at -80°C.  
**Storage Buffer:**  
PBS Only

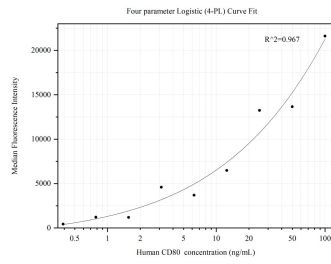
For technical support and original validation data for this product please contact:

T: 1 (888) 4PTGLAB (1-888-478-4522) (toll free in USA), or 1(312) 455-8498 (outside USA)

E: [proteintech@ptglab.com](mailto:proteintech@ptglab.com)  
W: [ptglab.com](http://ptglab.com)

**This product is exclusively available under Proteintech Group brand and is not available to purchase from any other manufacturer.**

## Selected Validation Data



Cytometric bead array standard curve of MP50098-1, CD80/B7-1 Monoclonal Matched Antibody Pair, PBS Only. Capture antibody: 68746-1-PBS. Detection antibody: 68746-2-PBS. Standard:Eg0060. Range: 0.391-100 ng/mL